



SIYC Race Week at Shelter Island Anniversary Regatta

Saturday August 7, 2021

Sailing Instructions

1 RULES

- 1.1 The regatta will be governed by the rules as defined in the Racing Rules of Sailing (RRS), the IRC Rules Parts A, B and C and the ELIYA General Conditions, except as changed by these sailing instructions
- 1.2 RRS 52 is modified to allow power operated winches for yachts sailing in non-spinnaker classes.

2 NOTICES, COMPETITOR INFORMATION and SIGNALS MADE ASHORE

- 2.1 Any notices, amendments to the Sailing Instructions and all results will be posted on Yacht Scoring. This amends RRS 90.2(c).
- 2.2 Any amendments to the Sailing Instructions will be available before 0900 hours on the day of the race. Code flag "L" will be hoisted on the flagpole at the Shelter Island Yacht Club. Sailing instructions and any amendments will not be available from the Race Committee Signal Boat.
- 2.3 When "AP" is displayed ashore the first signal will be at least one (1) hour after lowering of the "AP".
- 2.4 The Race Committee will make any announcements over VHF Channel 72 starting at 0900 hours.
- 2.5 Failure to hear or see any notices, signals made ashore, changes or amendments will not be cause for redress.

3 DIVISIONS and IDENTIFICATION

Division assignments will be indicated on the Scratch Sheet which will be posted on Yacht Scoring.

To facilitate identification by other entrants and the Race Committee, entrants are **required** to display the numeric pennant corresponding to their division from the backstay or from another prominent location if no backstay is available. Yachts not flying a division flag will not be scored and will be disqualified without a hearing. This changes RRS 62.1 (a).

4 SCHEDULE OF RACES

- 4.1 There will be one or more races for each of the divisions identified on the scratch sheet.
- 4.2 The scheduled time for the warning signal for the first division to start will be 1100 hours.
- 4.3 The warning signal for subsequent divisions shall be made with or after the starting signal for the preceding division.
- 4.4 Divisions might not start in numerical order. The Race Committee may combine two or more divisions into one start by displaying multiple division flags at the Warning Signal. The Race Committee will endeavor to announce the next division(s) to start on VHF Channel 72
- 4.5 The warning signal for the first division to start a race shall not be made after 1500 hours.

5 LOCATION OF THE START

- 5.1 The location for the starting area(s) will be posted on the Yacht Scoring website and broadcast on VHF Channel 72 starting at 0900 hours. The starting area(s) for the Divisions may not be the same. See Attachment 1, SIYC Primary Race Areas. The failure for a yacht to hear this announcement will not be grounds for redress. This changes rule 62.1(a).
- 5.2 If after assembling at the announced location conditions call for a different start location, the Race Committee boat will announce the new starting area(s) on VHF Channel 72 and proceed to the new starting area(s).

6 CHECK – IN AND RETIREMENT

- 6.1 **There is no check-in.** Registration on Yacht Scoring replaces check-in.
- 6.2 A yacht that retires from the race shall notify the Race Committee on VHF Channel 72 as soon as possible.

7 COURSES MARKS

The course marks are described in Appendix A, Sections A2, A3 and A4.

8 THE START

- 8.1 Races will be started by using RRS 26.
- 8.2 The starting line is described in Appendix A.
- 8.3 Yachts whose warning signal has not been made shall keep clear of the starting area.
- 8.4 A yacht starting later than 15 minutes after her starting signal will be scored DNS. This changes Rule A4.

9 INDIVIDUAL RECALLS

- 9.1 The Race Committee will endeavor to hail each premature starter over VHF Channel 72. However, failure to make such an announcement, nor the timing or order of such an announcement, shall not be grounds for redress. This changes Rule 62.1(a).
- 9.2 In the event of a general recall for any division, the start sequence will restart with the recalled division.

10 THE FINISH

The finish for the races is described in Appendix A.

11 GOVERNMENT BUOYS

Government buoys have no required side except when specified as marks of the course. Caution should be exercised for safe navigation.

12 PENALTY SYTEM

Rule 44.1 is changed to incorporate Rule V1.

13 TIME LIMITS

- 13.1 The time limit for each division will be four (4) hours after the start time for that division.

- 13.2 If the time limit for a division expires per RRS 35, the race will be abandoned for that division. Abandonment will be signaled by the Race Committee by displaying code flags “N” over “A” and the division flag for each abandoned division and an announcement over VHF Channel 72.

14 PROTESTS AND REQUEST FOR REDRESS

- 14.1 A yacht intending to protest is requested to report both their intention to protest and the yacht(s) being protested to the Race Committee over VHF Channel 72 at the finish of the race.
- 14.2 Protests or requests for redress shall be submitted as soon as practicable but not later than one (1) hour after the Race Committee Finish Boat has docked or ½ hour after the last yacht in each fleet has reached the mooring area by SIYC, whichever is later. The time limit for filing a protest will be posted on the SIYC Notice Board on the south deck of the SIYC clubhouse.
- 14.3 All protest hearings will take place at the SIYC as soon as possible after the notices are posted. The Protest Committee will attempt to hear protests in the order of receipt. Representatives of yachts who are parties to a hearing shall remain on call in the vicinity of the protest rooms (SIYC Sailing Center).
- 14.4 When a yacht has been involved in an incident that may be subject to a protest, it is her responsibility to check the protest notices at the end of the protest filing time to see if she is cited in a protest. Failure of any yacht to appear when called for a hearing will be considered by the Protest Committee as grounds for proceeding under Rule 63.3(b).
- 14.5 Rule 63.5 is changed by adding “A protest involving contact may be heard by the Protest Committee even though the requirements of 61.1(a) and 61.3 have not been fulfilled”.
- 14.6 Breaches of SIs 6 and 8.3 will not be grounds for protest by a yacht. This changes Rule 60.1(a).

15 SCORING

PHRF entries will be scored using time-on-time scoring with PHRF TCFs calculated using the current ELIYA formula. IRC entries will be scored using the IRC Time Corrector (TCC) using time-on-time scoring.

16 SAFETY

It is recommended that all boats be compliant with the current US Safety Requirements (USSER) US Near Shore category. These regulations are available on the US Sailing website. Competitors participate in this race at their own risk. See RRS 3, Decision to Race. The safety of a boat and her crew is the sole and inescapable responsibility of the person in charge of the boat.

17 COMMUNICATIONS

- 17.1 The Race Committee will monitor VHF Channel 72 for race related communications. Boats shall carry an operating VHF radio capable of receiving weather bulletins and communications from the Race Committee as well as communicating any emergency on board.
- 17.2 In the event of an emergency, contact the Race Committee on VHF **Channel 72**.

18 PRIZES

Results will be posted on “Yacht Scoring” immediately after racing. Awards for the top boats in each class will be presented at the Competitor’s party immediately following the racing.

19 OFFICIAL BOATS

Official boats will be marked as follows:

| | |
|-----------------------|---------------------------------|
| Signal / Finish Boats | Blue race committee flag |
| Mark and Pin Boats | Yellow auxiliary committee flag |

20 LIABILITY WAIVER

Competitors participate in the regatta entirely at their own risk. See RRS 3, Decision to Race. A boat's decision to participate in a race or to continue racing is her's alone." Competitors participate in the regatta entirely at their own risk. It is also the boat's responsibility to follow all applicable COVID 19 guidelines and protocols. Attention is also drawn to RRS 46 and USSER 1.2, Responsibility. The Organizing Authority will not accept any liability for material damage, personal injury, illness or death sustained in conjunction with or prior to, during, or after the regatta. It is also the boat's responsibility to follow all applicable COVID 19 guidelines or protocols.

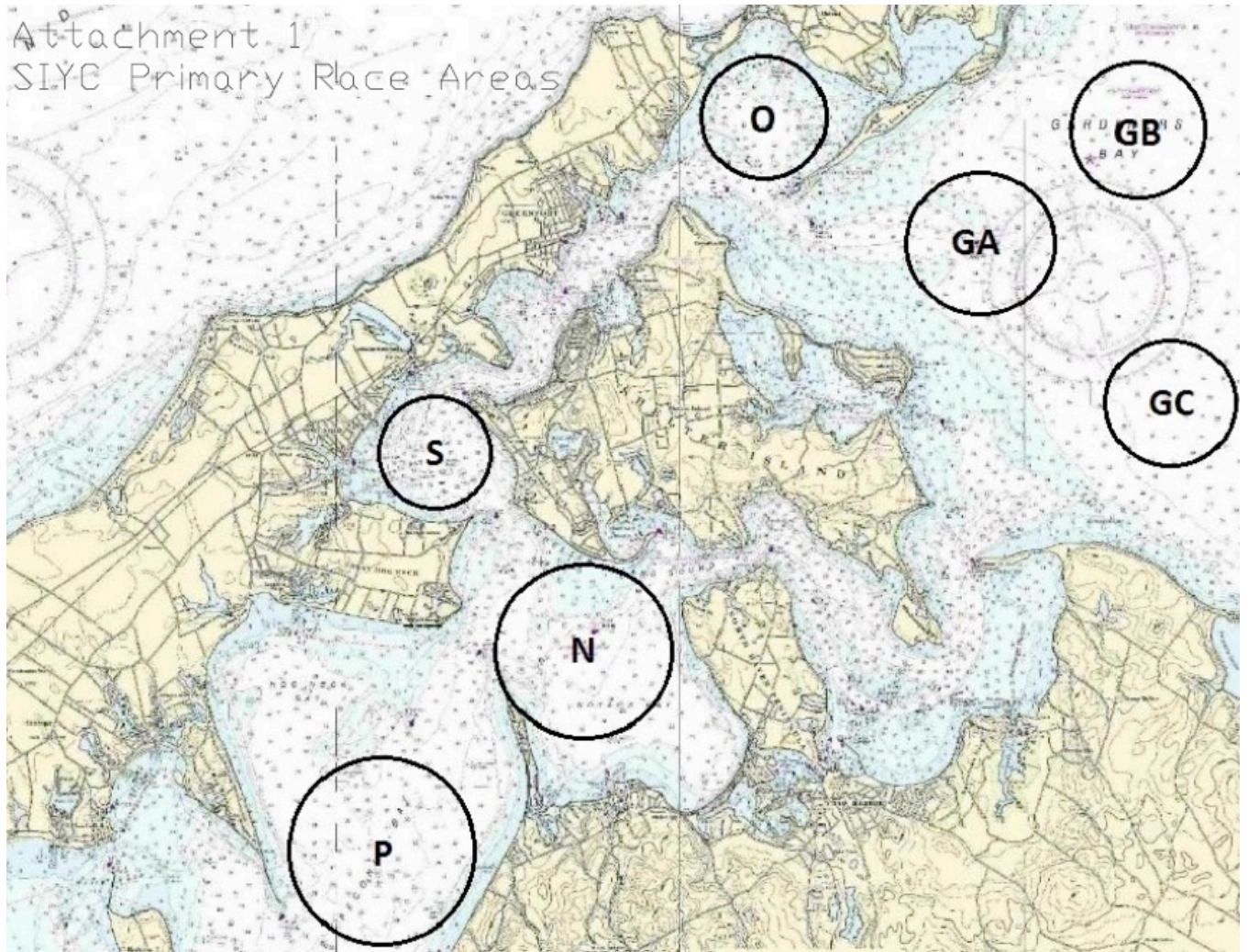
21 INSURANCE

Each participating boat shall be adequately insured with valid third-party liability insurance that is appropriate taking into account the value of the boats racing and the type of racing.

22 FURTHER INFORMATION

PRO Jeffrey Bresnahan
Tel: 631-749-1829
Email: rc@siyc.com

Attachment 1
SIYC Primary Race Areas



Gardiners Bay (“G”):

- Area “GA” - in the vicinity of RW “N” Mo(A) WHIS 1 ½ miles NE Ram Island
- Area “GB” - 2 miles South of Orient Point
- Area “GC” - 1 1/2 miles West of N”14” marking Crow Shoal

Orient Harbor (“O”)

Southold Bay (“S”)

Noyak Bay (“N”)

Peconic Bay (“P”) - One miles south of R”18”

ANNIVERSARY RACE SAILING INSTRUCTIONS

Appendix A

A1 COURSES for the Anniversary Regatta

A1.1 START

Between a staff displaying an Orange flag on the Race Committee Signal Boat and a green inflatable buoy. Note that it is possible that the same Race Committee Signal Boat will be used for both the Start and Finish with the starting line set to one side and finish line, set on the other.

A1.2 COURSE DESCRIPTIONS

A1.2.1 The courses for each division will be configured by the Race Committee Signal Boat when it is on station at the starting location. These courses will be communicated from the Race Committee by white board on the stern of the Race Committee Signal Boat and by transmission on VHF Channel 72.

A1.2.2 Navigator Courses will be defined by the marks to be passed or rounded described in **A2** and **A3**, and the order and side on which each mark is to be left.

A1.2.3 Windward / Leeward Courses are described in **A4**.

A1.3 SHORTEN COURSE

The courses may be shortened at any course mark in accordance with Rule 32.

A1.4 WINDWARD MARK

A1.4.1 In order to achieve a proper start, the Race Committee may elect to set a weather mark at a distance from the starting line. The bearing and distance to this weather mark will be displayed on the Race Committee Signal boat with a white board. A flag "W" (windward mark) will be displayed over a red flag (leave to port) or a green flag (leave to starboard) at least five minutes prior to the first warning signal.

A1.4.2 The Race Committee may elect to set a long windward mark and a short windward mark. The distance displayed will be to the SHORT windward mark. The LONG windward mark will be on the same bearing at a distance of 0.5 NM beyond the short windward mark.

A1.4.3 If the flag "L" is displayed with the warning signal for a division, that division will use the LONG windward mark.

A1.4.4 If the flag "L" is **not** displayed at the warning signal for a division, that division will use the SHORT windward mark.

A1.4.5 The windward mark for a division may be used as a subsequent course mark for that division and will be designated as W (or W with flag "L" in the case of a LONG windward mark) with a P or S in the posted mark sequence for the course. Note that the side on which the windward mark (or if applicable, the Long windward mark) is to be left as a subsequent course mark might be different from the first rounding.

A1.5 FINISH

The finish will be between a staff displaying a blue flag on the Race Committee Finish Boat and a white inflatable buoy. Note that it is possible that the same Race Committee boat will be used for both the Start and Finish with the starting line set to one side and finish line, set on the other.

A2 NAVIGATOR MARKS and ROUNDINGS GARDINERS BAY

A2.1 MARKS

A2.1.1 GOVERNMENT MARKS

- | | |
|---|---|
| A | RW "N" Mo(A) WHIS 1 ½ miles NE Ram Island |
| B | N "14" Crow Shoal |
| C | RW "TM" Mo(A) Bell N of entrance to Three Mile Harbor |
| D | C "1" ENE of Cedar Point |
| E | R "2" FLR Bell 4s Entrance to Greenport Channel |
| F | C "3" Entrance to Greenport Channel off Cornelius Point |
| G | N "6" Orient Harbor |
| H | G "7" FI G 4s off Hay Beach |
| J | R "10" FLR 2.5s Fanning Point |
| K | G"1GI" FI G 4s Gong N of Gardiners Point Ruins |
| U | GR"MS" FI(2+1) G 6s Midway Shoal |

A2.1.2 DROP MARKS

Drop Marks will be inflatable marks positioned relative to RW "N" Mo(A) WHIS.

1. Race Marker 1 mile S (180 deg)
2. Race Marker 1.5 miles NW (315 deg)
3. Race Marker 1.5 miles N (000 deg)
4. Race Marker 2 miles NE (045 deg)
5. Race Marker 2 miles E (090 deg)
6. Race Marker 2 miles SE (135 deg)
7. Race Marker 2 miles S (180 deg)
8. Race Marker 3 miles NE (045 deg)
9. Race Marker 3 miles ENE (067.5 deg)
10. Race Marker 4 miles E (090 deg)
11. Race Marker 3.5 miles SE by S (146 deg)

ALL BEARING DIRECTIONS ARE MAGNETIC.

A2.2 ROUNDINGS

Letter "S" indicates mark to be left to STARBOARD

Letter "P" indicates mark to be left to PORT

A3 NAVIGATOR MARKS and ROUNDINGS PECONIC BAY

A3.1 MARKS

A3.1.1 GOVERNMENT MARKS

| | |
|---|--|
| L | G "11" Fl G 4s Jennings Point |
| M | "CG" about 0.7 miles NW (315 deg) from R "12" Paradise Point |
| N | R "12" Fl R 4s Paradise Point |
| P | N "14" Great Hog Neck |
| Q | C "15" Black Dog Rock |
| R | R "16" Fl R 4s Noyak Bay |
| S | G "17" Fl G 4s Jessup Neck |
| T | R "18" Fl R 4s Hog Neck Bay |

A3.1.2 DROP MARKS

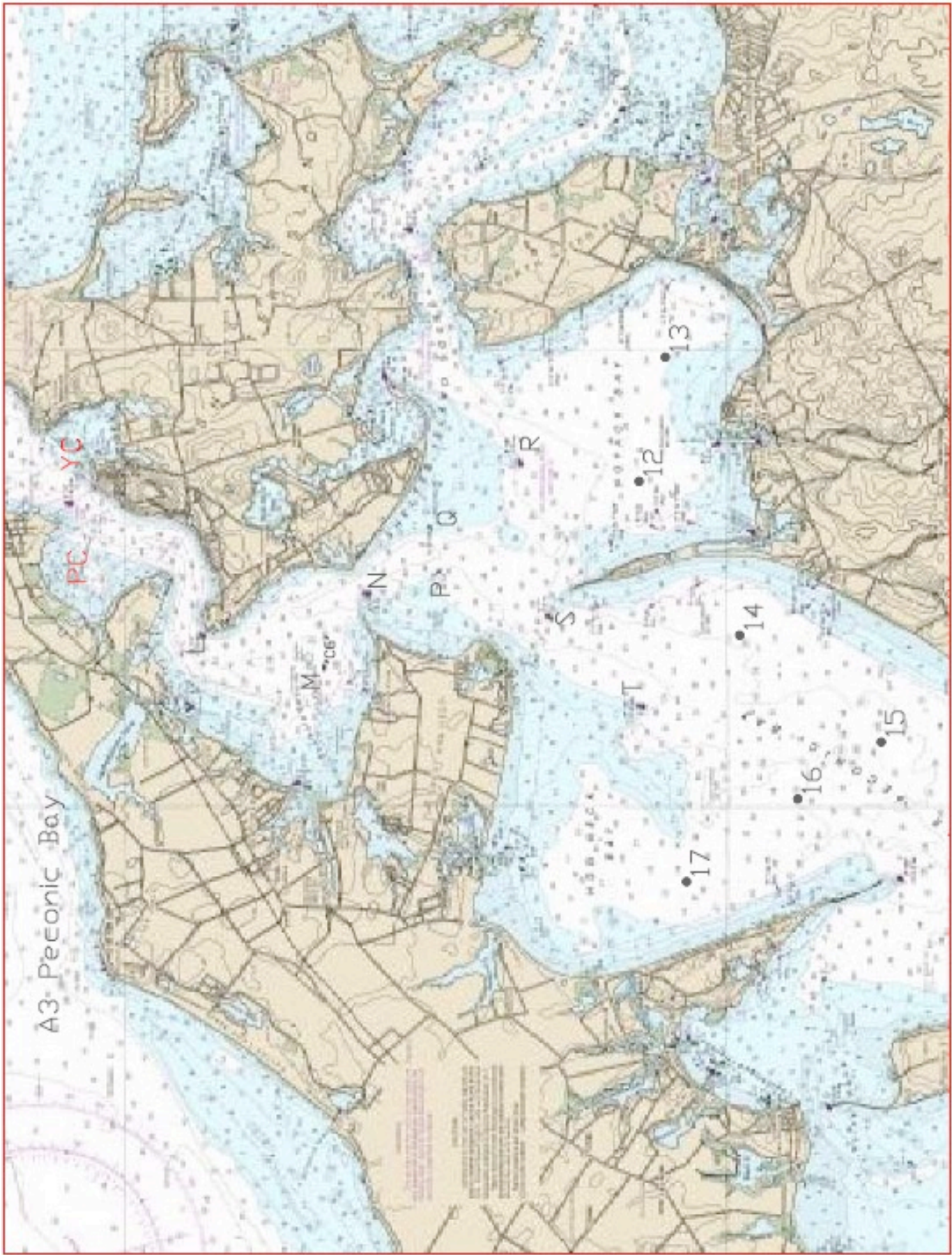
| | |
|----|--|
| 12 | Race Marker 1 mile SSW (202.5 deg) from R "16" Noyak Bay |
| 13 | Race Marker 1.5 miles SSE (157.5 deg) from R "16" Noyak Bay |
| 14 | Race Marker 1 miles SSE (157.5 deg) from N "18" Hog Neck Bay |
| 15 | Race Marker 2 miles SSW (202.5 deg) from N "18" Hog Neck Bay |
| 16 | Race Marker 1.5 miles WSW (247.5 deg) from N "18" Hog Neck Bay |
| 17 | Race Marker 1.5 miles W (270 deg) from N "18" Hog Neck Bay |

ALL BEARING DIRECTIONS ARE MAGNETIC.

A3.2 ROUNDINGS

Letter "S" indicates mark to be left to STARBOARD

Letter "P" indicates mark to be left to PORT



A4 Windward - Leeward

