



## SOUTHERN BAY RACE WEEK

June 3 - 6, 2021

### SAILING INSTRUCTIONS

**Organizing Authorities:  
Hampton Yacht Club  
Cruising Club of Virginia  
Old Point Comfort Yacht Club**

*The notation (DP) after a rule means that, at the discretion of the Protest Committee, the penalty for a breach of that rule may be less than DSQ. The notation (RC) after a rule means that only the Race Committee or Protest Committee can protest a breach of that rule.*

#### 1. RULES

- 1.1 The regatta will be governed by the Racing Rules of Sailing, 2021-2024, as modified herein.
- 1.2 US Sailing Prescriptions to RRS 63.2 will not apply.
- 1.3 For the One-Design Course only, Appendix V1 (Penalty at the Time of the Incident) applies.
- 1.4 The Viper Class Rule requiring the use of class bow numbers will be in effect.

#### 2. ENTRIES

- 2.1 The regatta is open to monohull keelboats or multihulls over 20 feet LOA.
- 2.2 All participating boats must meet current US Sailing Nearshore Safety Equipment Requirements, except that One-Design Fleets must meet safety standards of their class rules.
- 2.3 Eligible boats may enter by doing one of the following:
  - a. Entering online at [www.yachtscoring.com/emenu.cfm?eid=14283](http://www.yachtscoring.com/emenu.cfm?eid=14283)
  - b. Completing an official SBRW Entry Form (available at [www.yachtscoring.com](http://www.yachtscoring.com)) and mailing it to Lin McCarthy, 4401 Chesapeake Ave, Hampton, VA 23669.
- 2.4 All boats, except those in the Cruising Class, must have a current, valid measurement certificate on file with their appropriate Class Association.
  - a. PHRF ratings will be those posted on the PHRF of the Chesapeake Valid List at the time of the event or a temporary rating issued by a handicapper of PHRF of the Chesapeake.
  - b. Cruising Class ratings will be assigned by the Race Committee and may not be appealed.
- 2.5 An entered boat may not change fleets later than 1800 on Thursday, June 3.
- 2.6 The owner/skipper of each boat entered shall be responsible for the actions of his/her crew and guests. The legal drinking age in Virginia is 21 years old. Proof of age will be required. In the event of a serious breach of conduct, sportsmanship, destruction of property, under age drinking, or failure to comply with a request from any regatta official, the boat or competitor may be subject to expulsion from the regatta.

### 3. BOAT REQUIREMENTS

**3.1** A bow number/decal will be supplied to each boat and shall be properly affixed to both sides of the hull at all times while racing. Mounting instructions will be supplied with the decal. *(DP)*

**3.2** Once launched, all boats (except Vipers) shall remain in the water until the conclusion of the regatta, except with prior written permission of the PRO. *(DP)*

**3.3** All boats (except Cruising Class) shall display either the sail number issued by their National Authority (US Sailing) or the number as maintained by their fleet or class. **All sail numbers on a boat must be the same**, except with prior written permission from the PRO. *(DP) (RC)*

**3.4** From the backstay, each boat shall display her class flag or ribbon as per Appendix F. *(DP)*

### 4. NOTICES TO COMPETITORS & CHANGES TO SAILING INSTRUCTIONS

**4.1** Notices to competitors and Changes to the Sailing Instructions will be posted on the electronic Official Notice Board located at <https://yachtscoring.com/emenu.cfm?eID=14283>.

It is the responsibility of each competitor to check the Official Notice Board for any Official Notices and/or S.I. changes. Courtesy, unofficial written copies may also be posted at HYC.

**4.2** Changes to these Sailing Instructions will be posted by 0830 on the day they will take effect, except that any change to the schedule of races will be posted no later than the expiration of the protest time limit on the day before it will take effect.

### 5. SIGNALS MADE ASHORE

**5.1** Signals made ashore will be displayed at the HYC flagpole.

**5.2** The display of Flag "AP" ashore accompanied by two sound signals means the start of racing is postponed. The lowering of Flag "AP" ashore with one sound signal means the Warning Signal for the next race shall be made in not less than 60 minutes. This changes Race Signals "AP".

**5.3** If possible, any abandonment, postponement ashore, or relocation of racing to the harbor will be posted on the electronic Notice Board by 0830 and broadcast on the designated VHF radio channels for as long as the RC deems necessary. If such a decision is made later than 0830, the electronic posting and radio announcement will be made ASAP.

### 6. RACING AREAS AND RENDEZVOUS

#### 6.1 One-Design Course:

- (a) **Friday:** Multiple windward/leeward races in harbor. (See Appendix B)  
Rendezvous at: 36 56.97 N 76 22.40 W Y N "J" NE of Mid. Ground Lt
- (b) **Saturday:** Multiple windward/leeward races in harbor. (See Appendix B)  
Rendezvous at: 36 58.13 N 76 22.00 W R N "20" off Hampton Flats
- (c) **Sunday:** Multiple windward/leeward races in harbor. (See Appendix B)  
Rendezvous at: 36 58.13 N 76 22.00 W R N "20" off Hampton Flats

#### 6.2 PHRF Course:

- (a) **Friday:** Multiple windward/leeward races in harbor. (See Appendix C)  
Rendezvous at: 36 58.13 N 76 22.00 W R N "20" off Hampton Flats  
\*\* **Note 1:** PHRF C boats will race on the One-Design Course on Friday & Sunday.
- (b) **Saturday:** SBRW Distance Race in Bay. (See Appendix D)  
Rendezvous at: 37 01.98 N 76 15.75 W R "2" off Buckroe  
\*\* **Note 2:** PHRF C boats will do the Distance Race in the Bay on Saturday.  
\*\* **Note 3:** Should the Distance Race be relocated into the harbor on Saturday, all fleets will rendezvous in the harbor and race as per their Sunday program.
- (c) **Sunday:** Multiple windward/leeward races in harbor. (See Appendix C)  
Rendezvous at: 36 56.97 N 76 22.40 W Y N "J" NE of Mid. Ground Lt  
\*\* **Note 1:** PHRF C boats will race on the One-Design Course on Friday & Sunday.

### 6.3 Cruising Course:

(a) **Saturday:** SBRW Distance Race in Bay. (See Appendix D)

Rendezvous at: 37 01.98 N 76 15.75 W R "2" off Buckroe

\*\* **Note 4:** Should the Distance Race be relocated into the harbor on Saturday,

The Cruising Fleet will rendezvous and race in the harbor and race as per Appendix E.

(b) **Sunday:** One Random Leg Race in harbor. (See Appendix E)

Rendezvous at: 37 00.18 N 76 20.28 W R "4" at Hampton River

**\*\*Note to all fleets: Rendezvous locations are approximate. The RC may locate the starting line within 1 nm of the designated rendezvous point without flying Flag L.**

### 7.0 DAILY SCHEDULES

#### **Thursday, June 3**

Check-In/Welcome 1700  
Skippers Meeting 1900

#### **Friday, June 4**

Warning 1000  
Pizza Night Social 1700 - 2030  
Daily Awards 1900 (approx.)

#### **Saturday, June 5**

Warning 1000  
Music & food 1700 - 2030  
Daily Awards 1900 (approx.)

#### **Sunday, June 6**

Warning 1000  
Final Awards & Doyle Dawgs ASAP

**\* On Sunday, no starting sequence will begin after 1415.**

### 8. APPENDICES

**Information for each course is promulgated in the following S.I. Appendices:**

- a. **Appendix A** shows the Racing Areas for each day.
- b. **Appendix B** shows information on One-Design Drop Mark Courses.
- c. **Appendix C** shows information on PHRF Drop Mark Courses.
- d. **Appendix D** shows information on the Saturday Distance Race.
- e. **Appendix E** shows information on the Cruising Courses for Sunday.
- f. **Appendix F** shows Classes, Fleet Splits, and Order of Starts.

### 9. CLASSES, FLEET SPLITS, AND ORDER OF STARTS

**9.1** Classes, Fleet Splits and Order of Starts (Appendix F) will be officially announced, posted, and distributed at the Thursday Skippers Meeting. Prior to that, preliminary, unofficial information will be posted and updated at HYC and on the event website at [www.yachtscoring.com](http://www.yachtscoring.com).

**9.2** Classes will be organized and, if necessary, sub-divided to produce the best racing.

### 10. COURSES

**10.1** When appropriate, RCs will display course information prior to the warning signal for a race and may broadcast course information via the designated radio channel for that course. Fleets shall sail the course indicated on the course board, unless the course is pre-determined by the S.I.s.

**10.2** The bearing and distance indicated on the course board will be to Mark 1 (Long Weather Mark). Mark 2 (Short Weather Mark) will be set on the same bearing as and approx. 0.2-0.3 nm to leeward of Mark 1.

## 11. MARKS

### 11.1 One-Design & PHRF Drop Mark Descriptions (Appendices B & C):

Mark 1 (PHRF)	5' <b>Red</b> Tetrahedron
Mark 1 (OD)	5' <b>Orange</b> Cylinder (w/ <b>black</b> band)
Offset (OD only)	<b>Red Ball</b>
Mark 2 (Both)	3' <b>Orange</b> Tomato
Change Mark (PHRF)	5' <b>Yellow</b> Tetrahedron
Change Mark (OD)	3' <b>Yellow</b> Tomato
Leeward Gate (Both)	3' <b>Yellow</b> "West Marine" Inflatables
Starting Pin (Both)	3' <b>Green</b> Tomato
Finish Pin (Both)	2' <b>Red</b> Cylinder

**11.2** For Saturday's Distance Race: See Appendix D.

**11.3** For Sunday's Cruising Course: See Appendix E.

## 12. BOAT CHECK-IN

Before the warning signal for her first race each day, each boat shall pass by the stern of the RC Signal Boat and hail her name and/or sail number until acknowledged by the RC. *(DP) (RC)*

## 13. THE START

**13.1** Races will be started using RRS 26 as modified by Instruction 13.2 below.

**13.2** Approximately one (1) minute prior to the beginning of a starting sequence, the RC will make an Attention Signal consisting of a series of short sounds. This is not a timed signal.

**13.3** For all drop mark courses, the starting line will be between the staff displaying an orange flag on the RC Signal Boat at the starboard end of the line and a green tomato at the port end.

**13.4** Appendix D describes the Saturday Distance Race starting line.

**13.5** Appendix E describes the Sunday Cruising starting line.

## 14. COLLISION WITH RACE COMMITTEE BOAT

If any boat collides with any Race Committee vessel and causes injury or serious damage, her penalty shall be to retire. *(DP)*

## 15. RECALLS

**15.1** Individual Recalls will be signaled in accordance with RRS 29.1. Additionally, the Race Committee will attempt to notify premature starters via hail on the designated VHF radio channel for that course.

**15.2** Failure of this transmission to be made or received, promptness of the notification, or the position of a boat in the notification sequence shall not be grounds for redress. This changes RRS 62.1(a).

## 16. COURSE CHANGE AFTER START

**16.1** To change the next leg of the course, the Race Committee will lay a new mark and remove the original mark as soon as practicable.

**16.2** Flag "C" displayed over a pink flag indicates the change is for the final weather leg only.

**16.3** Only one Change Mark will be set for any course change. It will be set at a distance between that of the original Marks 1 & 2. All fleets affected by the change shall round this single Change Mark.

**16.4** No Offset Mark will be set with any Change Mark.

## **17. SHORTENING COURSE**

**17.1** Courses may be shortened as per RRS 32.

**17.2** For Saturday's Distance Race only, the final sentence of RRS 32.2 is changed to read:

"A course may be shortened even if a boat has already passed the mark at which the race is being shortened, provided an RC boat is on station and records the exact time at which each boat rounds that mark." All boats will be scored using the time they passed the mark at which the course is shortened.

## **18. THE FINISH**

**18.1** For downwind drop mark finishes, the finish line will be on the opposite side of the RC Signal Boat from the starting line. The finish line will be between the staff displaying a blue flag on the RC Signal Boat at the starboard end of the line (looking downwind) and a red cylinder at the port end. The finish line will be located approx. 600' to leeward of the leeward mark or gate. (See Appendices B & C).

**18.2** For upwind drop mark finishes, the finish line will be between the staff displaying a blue flag on the RC Finish Boat and Mark 1 or, if the course has been changed, the Change Mark.

**18.3** For Saturday's Distance Race in the Bay, the finish line will be between CCV Bay Mark Q (R "22") at the port end of the line and the staff displaying a orange flag on the Fort Monroe Seawall at the starboard end. (See Appendix D)

**18.4** For Sunday's Cruising Course, the finish line is as described in Appendix E.

**18.5** For all courses, each boat is responsible for taking her own finish time and recording the name and/or sail number of the boat finishing directly ahead and astern of her. This information shall be provided to the Race Committee upon request.

**\*\* Flag "A" displayed with no sound as boats finish means "No more racing today."**

## **19. THE PENALTY SYSTEM**

**19.1** For the One-Design Course only, Appendix V1 (Penalty at the Time of the Incident) is in effect.

**19.2** For all other fleets, RRS 44.1 is in effect.

## **20. CALLING BOATS IN**

**20.1** In the interest of starting another race or completing the day's racing in a timely fashion, the Race Committee may assign a finish position to any boat(s) still racing, provided their position(s) can be determined in a reasonable manner. Such boat(s) will be scored as finished. This changes RRS 28.1, 35, A3, and A4.

**20.2** If another race is to be sailed that day, any boats called in as per S.I. 20.1 shall proceed as quickly as possible to the starting area to facilitate prompt starting of the next race. (DP)

## **21. TIME LIMITS**

**21.1** For the One-Design Course, any race in which no boat sails the course and finishes within two (2) hours after the start of her fleet will be abandoned for that fleet. Also, any boat still racing but not finished within 20 minutes after the first boat in her fleet sails the course and finishes within the time limit will be scored TLE (Time Limit Expired). This changes RRS 35.

**21.2** For the PHRF Course on Friday and Sunday, any race in which no boat sails the course and finishes within 2 ½ hours after the start of that fleet will be abandoned for that fleet. Also, any boat still racing but not finished within 30 minutes after the first boat in her fleet sails the course and finishes within the time limit will be scored TLE (Time Limit Expired). This changes RRS 35.

**21.3** For the Distance Race on Saturday, the time limit for all boats to finish is 1600. Boats still racing but not finished by 1600 will be scored TLE (Time Limit Expired) without a hearing.

**21.4** For the Cruising Course on Sunday, the time limit for all boats to finish is 1400. Boats still racing but not finished by 1400 will be scored TLE (Time Limit Expired).

**21.5** A boat scored TLE (Time Limit Expired) will, without a hearing, be scored one point more than the number of boats in her fleet who sailed the course properly and finished within the time limit. This changes RRS 35, A4, A5.1, A5.2, and A10.

## **22. RETIRING**

Any boat retiring from a race or leaving the racing area before racing is concluded for the day shall promptly notify the Race Committee for her course, either by hail or radio transmission on the designated VHF radio channel. Such attempt at notification shall be continued until acknowledged by the Race Committee. *(DP) (RC)*

## **23. SCORING**

**23.1** All PHRF and Cruising Fleets will be scored Time on Distance.

-The Windward/Leeward rating will be used for all races except that:

- The PHRF Circular Random (CR) Rating will be used for Saturday's Distance Race.

**23.2** Appendix A2.1 is modified as follows:

a. If fewer than six (6) races are completed, a boat's series score will be the total of her race scores.

b. If six (6) or more races are completed, a boat's series score will be the total of her scores, excluding her worst score.

c. For the Ultimate 20 Fleet only, there will be one throw-out if more than six (6) races are completed.

**23.3** The completion of at least one race will constitute a regatta.

**23.4** All scoring and race results will be posted as soon as possible on [www.yachtscoring.com](http://www.yachtscoring.com).

In addition, printed results will be posted on the window at the NE corner of the HYC lounge.

**23.5** Daily trophies will be computed by combining all races for that day into a single score.

**23.6** All races will be considered separately for overall Race Week scoring.

## **24. PROTESTS**

**24.1** The Judges Table and Protest Notice Board will be located in the HYC lounge.

**24.2** Written protests must be delivered to the Judges' Table within one hour of the RC Signal Boat for that boat's course docking at HYC. Protest forms will be available at the Judges' Table.

**24.3** US Sailing Prescriptions to RRS 63.2 will not apply.

**24.4** All protest information including time limits, protests filed, and approximate hearing schedules will be posted on the electronic Official Notice Board within 20 minutes of the end of protest time. In addition, courtesy written information may be posted on the Protest Notice Board located near the Judges' Table. It is each boat's responsibility to check to see if she is cited in a protest or may have an interest at a hearing.

**24.5** If the RC posts a list of boats scored OCS, ZFP, or UFD before the Protest Time Limit, a request for redress based on the posted score shall be made no later than fifteen (15) minutes after the Protest Time Limit. This changes RRS 62.2

**24.6** On Sunday, a request for redress from a jury decision shall be delivered no later than thirty (30) minutes after the decision was posted. This changes RRS 62.2.

## **25. RADIOS**

**25.1** All boats shall carry a working VHF radio. *(DP)*

**25.2** Except in an emergency, a boat that is racing shall not make voice or data transmissions and shall not receive voice or data communications that are not available to all boats. This restriction also applies to mobile telephones. *(DP)*

**25.3** The Race Committee will not respond to transmissions from competitors except to acknowledge retirements, protests, penalties reported or taken, or requests for emergency assistance.

**25.4** Race Committee broadcasts of its intentions, courses to be sailed, flag sequences, postponement updates, etc. are as a courtesy only and in no way relieve competitors of their responsibility to monitor and respond to Race Committee flags and signals.

**25.5** Failure of the RC to make a broadcast, the timing of a broadcast, or failure of a boat to hear a broadcast, shall not be grounds for redress. This changes RRS 62.1(a).

### **25.6 The designated radio frequency for each course is:**

- |                                             |                                                |
|---------------------------------------------|------------------------------------------------|
| <b>a. One-Design Course (Daily)</b>         | <b>VHF-71</b>                                  |
| <b>b. PHRF Course (Friday &amp; Sunday)</b> | <b>VHF-72</b>                                  |
| <b>c. SBRW Distance Race (Saturday)</b>     | <b>VHF-72 (Finish Line on Seawall = VHF-9)</b> |
| <b>d. Cruising Course (Sunday)</b>          | <b>VHF-73</b>                                  |

## **26. SAFETY**

**26.1** A boat shall not exercise right of way over, cross in close proximity to, or interfere in any way with reasonable transit of the race area by military vessels, commercial freighters, tugs and tows, or other commercial vessels that are unable to respond readily. Any boat protested under this rule shall have the burden of proving that she did not interfere with the restricted vessel.

**26.2** Such protest may be filed by a competitor as per RRS 60.1(a) or by the Race Committee as per RRS 60.2(a).

**26.3** In addition, the Race Committee, Protest Committee, or Organizing Authority may protest as a direct result of a report received from an offended vessel and/or local port authority. The time limit for such protest is within 24 hours of receiving such report. The penalty for breaking this rule shall be disqualification under RRS 2 (Fair Sailing).

**26.4** If a boat without way in a ship channel infringes RRS 42.1 by using her engine to clear the channel, she shall not improve her position in the race but may continue racing. Immediately upon finishing, she shall inform the Race Committee of the incident.

**26.5** RRS 40 (Personal Buoyancy) is changed to read, "It shall be the individual responsibility of each competitor to wear adequate personal buoyancy when conditions warrant."

## **27. AWARDS & PRIZES**

**27.1** Appropriate daily and series awards will be given to boats in each fleet.

**27.2** A Boat of the Day Flag will be presented each day to the outstanding boat in each Division.

**27.3** Other "Special Awards" flags and/or prizes may be presented at any time.

**27.4** The Black Seal Cup (Boat of the Week) will be presented at the awards ceremony Sunday.

## **28. MEDIA RIGHTS**

By their entry, competitors give absolute right and permission for any photograph or video footage of themselves or the boat they are sailing to be published in any media the regatta organizers see fit.

## **29. DISCLAIMER OF LIABILITY**

**29.1** Competitors participate in the regatta entirely at their own risk. See rule 3, Decision to Race. The organizing authority will not accept any liability for material damage or personal injury or death sustained in conjunction with or prior to, during, or after the regatta.

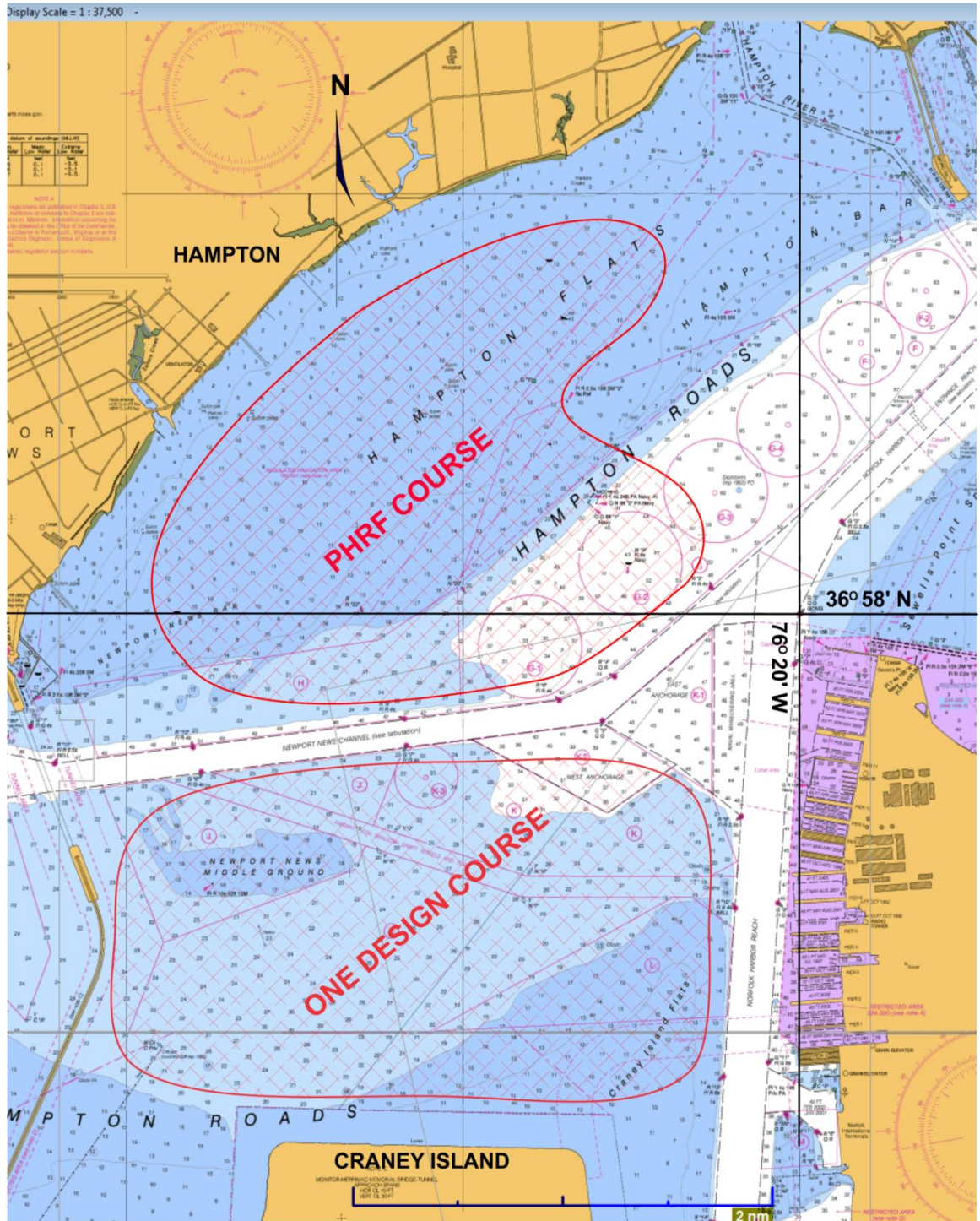
**29.2** It is the sole responsibility of the Skipper to ensure the boat complies with all class rules and that the boat is sound, seaworthy, and manned by a competent crew of appropriate number.

## **30. REGATTA CONTACTS AND OFFICIALS:**

Regatta Chairman	=	Jack Pope
Registration & Info	=	Lin McCarthy (757) 850-4225 <a href="mailto:mcbear@earthlink.net">mcbear@earthlink.net</a>
Principal Race Officer	=	John McCarthy
One-Design Course	=	Brian Deibler
Cruising/Multihull	=	Tom Connors
Official Scorer	=	Leanne Cranfill
Chief Judge	=	Jerry Thompson

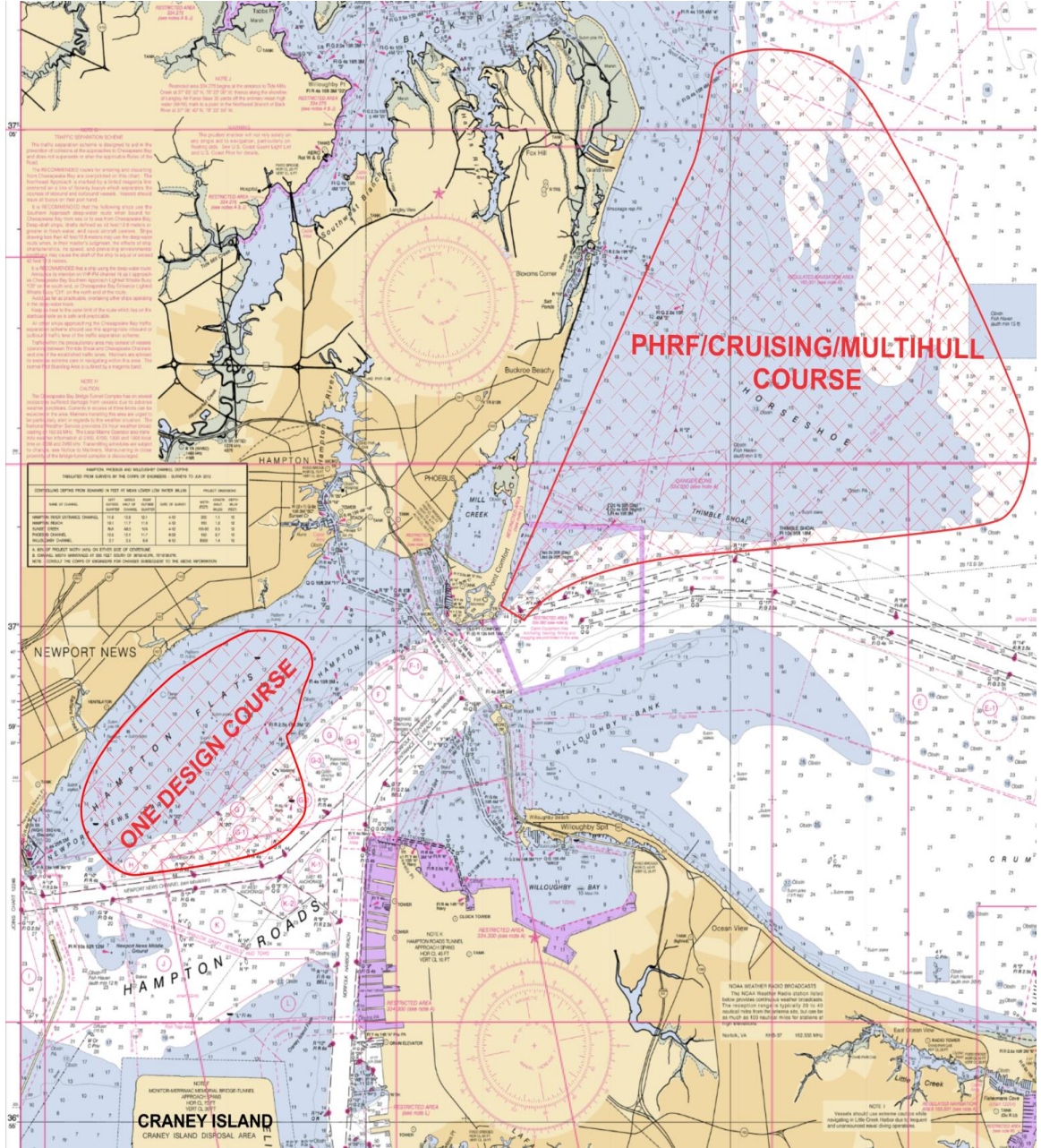


# APPENDIX A – RACING AREA FRIDAY, June 4, 2021



# APPENDIX A - RACING AREA

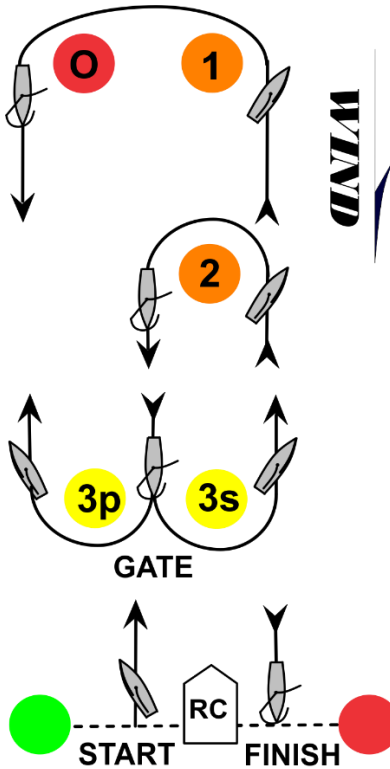
## SATURDAY - June 5, 2021



APPENDIX A - RACING AREA  
SUNDAY, June 6, 2021



**APPENDIX B  
ONE-DESIGN COURSE**



---

**\* Course Designations:**

**Course A = Start - Mark 1 - Offset - Gate - Mark 1 - Offset - Finish (Downwind)**

**Course C = Start - Mark 2 - Gate - Mark 2 - Finish (Downwind)**

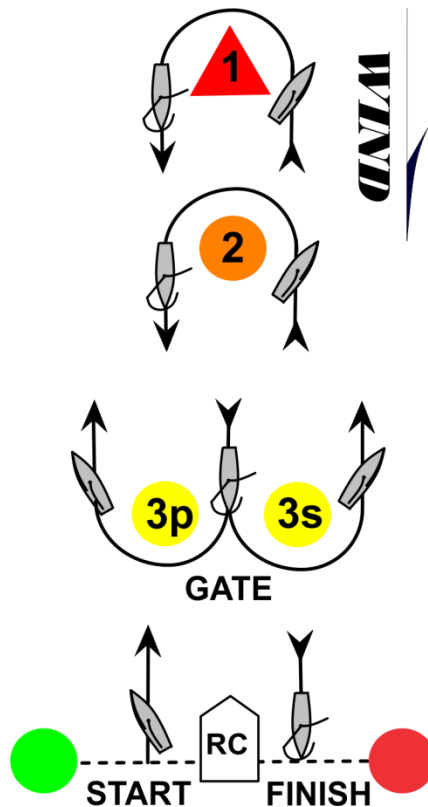
**Course W = Start - Mark 1 - Offset - Gate - Finish (Upwind)**

**Course Z = Start - Mark 2 - Gate - Finish (Upwind)**

- 
- \* An Offset Mark will be set approx. 200' to port of Mark 1.**
  - \* No Offset Mark will be set with Mark 2 or with any change mark.**
- 

- \* All marks, except the gate, shall be left to PORT.**
- \* If only one gate mark is present, round it to PORT.**
- \* The angle of the gate may be adjusted at any time without signal.**

**APPENDIX C  
PHRF COURSE (FRIDAY & SUNDAY)**



---

**\* Course Designations:**

**Course X = Start - Mark 1 - Gate - Mark 1 - Gate - Mark 2 - Finish (Downwind)**

**Course A = Start - Mark 1 - Gate - Mark 1 - Finish (Downwind)**

**Course B = Start - Mark 1 - Gate - Mark 2 - Finish (Downwind)**

**Course C = Start - Mark 2 - Gate - Mark 2 - Finish (Downwind)**

**Course W = Start - Mark 1 - Gate - Mark 1 - Gate - Finish (Upwind)**

**Course Z = Start - Mark 1 - Gate - Finish (Upwind)**

---

**\* Flag "C" displayed over **PINK** flag indicates course change is for the final weather leg only.**

**\* All marks, except the gate, shall be left to PORT.**

**\* If only one gate mark is present, boats shall round it to PORT**

**\* The angle of the gate may be adjusted at any time without signal.**

## APPENDIX D

## SATURDAY DISTANCE RACE IN BAY – 2021

MARK DESCRIPTIONS AND LOCATIONS

Starting Mark = Day Beacon R "2" (Off Buckroe)		37 01.98 N	76 15.75 W
Mark "J" FI G 2.5s "1YR" (York River Channel)		37 07.62 N	76 09.85 W
Long Drop (LD)	5' Red Tetrahedron	37 06.20 N	76 11.90 W
Short Drop (SD)	3' Green Tomato	37 04.70 N	76 13.20 W
Drop Mark 2 (D2)	5' Yellow Tetrahedron	37 02.20 N	76 10.70 W
RW Mo (A) WHIS "HC"	(Tail of Horseshoe)	37 01.32 N	76 08.97 W
Drop Mark 3 (D3)	Yellow West Marine Mark	37 03.10 N	76 13.30 W
Mark "X" FI G 2.5s "3"	(Salt Ponds Entrance)	37 03.23 N	76 15.65 W
Finish Mark = R "22"	(Off Fort Monroe Seawall)	37 00.15 N	76 17.87 W

-----

COURSE DESCRIPTIONS

Super Course – Super A

Start at R "2" – "J" (Star) – "Mo (A)" (Star) – "X" (Port) – Finish at R "22" (23.0 nm)

Course A – PHRF A

Start at R "2" – "LD" (Star) – "Mo (A)" (Star) – "X" (Port) – Finish at R "22" (19.9 nm)

Course B – PHRF B

Start at R "2" – "LD" (Star) – "D2" (Star) – "X" (Port) – Finish at R "22" (17.0 nm)

Course C – PHRF C

Start at R "2" – "LD" (Star) – "D3" (Star) – "X" (Port) – Finish at R "22" (14.0 nm)

Course D – PHRF Non-Spin and Cruising

Start at R "2" – "SD" (Star) – "D3" (Star) – "X" (Port) – Finish at R "22" (10.5 nm)

-----

\*\* PHRF CR ratings will be used for all fleets.

\*\* Lat/lons are approximate and not intended for navigation.

\*\* Radio communications with the RC will be via VHF-72.

\*\* When finishing, racers should monitor VHF-9 and respond promptly to any requests for information from the Finish Line Team.

\*\* The Finish Line flag will be orange.

**APPENDIX E - CRUISING COURSE IN HARBOR**

**\*\* Cruising fleets will sail this course on Sunday.**

**\*\* They will also sail it on Saturday IF the Distance Race is relocated into the harbor.**

**\*\* The Warning Signal will be at 1015 to allow other fleets time to exit the river.**

**CRUISING A**

<b><u>Marks</u></b>	<b><u>Location</u></b>	<b><u>Leave to</u></b>	<b><u>Lat/Lon</u></b>	
<b>Start = Day Beacon R "4" at Mouth of Hampton River</b>			<b>37 00.18 N</b>	<b>76 20.28 W</b>
<b>Day Beacon G "1"</b>	<b>Hampton Flats</b>	<b>PORT</b>	<b>36 59.12 N</b>	<b>76 21.60 W</b>
<b>FI R 4s R "6"</b>	<b>N News Channel</b>	<b>PORT</b>	<b>36 57.60 N</b>	<b>76 21.50 W</b>
<b>R N "14"</b>	<b>Hampton Bar</b>	<b>PORT</b>	<b>36 59.77 N</b>	<b>76 19.40 W</b>
<b>Day Beacon R "18"</b>	<b>Hampton Bar</b>	<b>STAR</b>	<b>36 58.78 N</b>	<b>76 21.07 W</b>
<b>FI R 2.5s 15ft 4M "2"</b>	<b>Hampton Bar</b>	<b>STAR</b>	<b>36 59.03 N</b>	<b>76 21.37 W</b>
<b>Day Beacon R "4"</b>	<b>Mouth of River</b>	<b>FINISH</b>	<b>37 00.18 N</b>	<b>76 20.28 W</b>

**Distance = 9.2 nm**

**CRUISING B**

<b><u>Mark</u></b>	<b><u>Location</u></b>	<b><u>Leave to</u></b>	<b><u>Lat/Lon</u></b>	
<b>Start = Day Beacon R "4" at Mouth of Hampton River</b>			<b>36 00.18 N</b>	<b>76 20.28 W</b>
<b>Day Beacon G "1"</b>	<b>Hampton Flats</b>	<b>PORT</b>	<b>36 59.12 N</b>	<b>76 21.60 W</b>
<b>FI R 4s R "6"</b>	<b>N News Channel</b>	<b>PORT</b>	<b>36 57.60 N</b>	<b>76 21.50 W</b>
<b>R N "16"</b>	<b>Hampton Bar</b>	<b>PORT</b>	<b>36 59.27 N</b>	<b>76 20.35 W</b>
<b>Day Beacon R "18"</b>	<b>Hampton Bar</b>	<b>STAR</b>	<b>36 58.78 N</b>	<b>76 21.07 W</b>
<b>FI R 2.5s 15ft 4M "2"</b>	<b>Hampton Bar</b>	<b>STAR</b>	<b>36 59.03 N</b>	<b>76 21.37 W</b>
<b>Day Beacon R "4"</b>	<b>Mouth of River</b>	<b>FINISH</b>	<b>37 00.18 N</b>	<b>76 20.28 W</b>

**Distance = 7.5 nm**

**\*\* Lat Lons are approximate and not intended for navigation.**

**\*\* The Race Committee will communicate with the fleet on VHF-73.**

**\*\* The time limit for all boats is 1400.**

**\*\* The Finish Line flag will be orange.**

**APPENDIX F (Page 1 of 2)**

**FLEET SPLITS, CLASS FLAGS, & ORDER OF STARTS**

*As per S.I. 4.1 should additional entries warrant additional fleet splits, they will be posted on the Official Notice Board.*

**FRIDAY & SUNDAY PHRF RACING IN HARBOR**

<b><u>Fleet</u></b>	<b><u>Ratings</u></b>	<b><u>Placard (Course Board)</u></b>	<b><u>Class Flag (backstay)</u></b>
<b>SUPER A</b>	<b>Under 50</b>	<b>Code Flag "1"</b>	<b>Code Flag "1"</b>
<b>PHRF A</b>	<b>51-99</b>	<b>Code Flag "9"</b>	<b>Code Flag "9"</b>
<b>PHRF B</b>	<b>100-151</b>	<b>Code Flag "6"</b>	<b>Code Flag "6"</b>
<b>Non-Spin (2HS)</b>	<b>All ratings</b>	<b>Code Flag "5"</b>	<b>Code Flag "5"</b>

**DAILY ONE-DESIGN RACING IN HARBOR**

<b><u>Fleet</u></b>	<b><u>Ratings</u></b>	<b><u>Placard (Course Board)</u></b>	<b><u>Class Flag (Backstay)</u></b>
<b>Viper 640</b>	<b>One Design</b>	<b>Viper Logo</b>	<b>None</b>
<b>Ultimate 20</b>	<b>One-Design</b>	<b>White</b>	<b>None</b>
<b>PHRF C</b>	<b>152 and Up</b>	<b>Code Flag "7"</b>	<b>Code Flag "7"</b>

**\*Note: On Friday & Sunday PHRF C will race in the Harbor on the One-Design Course. On Saturday, they will do the Distance Race in the Bay.**

**SATURDAY DISTANCE RACE IN BAY**

<b><u>Fleet</u></b>	<b><u>Ratings</u></b>	<b><u>Placard (Course Board)</u></b>	<b><u>Class Flag (Backstay)</u></b>
<b>Super A</b>	<b>Under 50</b>	<b>Code Flag "1"</b>	<b>Code Flag "1"</b>
<b>PHRF A</b>	<b>51-99</b>	<b>Code Flag "9"</b>	<b>Code Flag "9"</b>
<b>PHRF B</b>	<b>100-151</b>	<b>Code Flag "6"</b>	<b>Code Flag "6"</b>
<b>PHRF C</b>	<b>152 and Up</b>	<b>Code Flag "7"</b>	<b>Code Flag "7"</b>
<b>Non-Spin (2HS)</b>	<b>All Ratings</b>	<b>Code Flag "5"</b>	<b>Code Flag "5"</b>
<b>Cruising A</b>	<b>Up to TBA</b>	<b>White Flag</b>	<b>White Ribbon</b>
<b>Cruising B</b>	<b>TBA and Up</b>	<b>Green Flag</b>	<b>Green Ribbon</b>



**SUNDAY CRUISING COURSE**

<b><u>Fleet</u></b>	<b><u>Ratings</u></b>	<b><u>Placard (Course Board)</u></b>	<b><u>Class Flag (Backstay)</u></b>
<b>Cruising A</b>	<b>Up to TBA</b>	<b>White Flag</b>	<b>White Ribbon</b>
<b>Cruising B</b>	<b>TBA and Up</b>	<b>Green Flag</b>	<b>Green Ribbon</b>

---

**Note: As per S.I. 3.4, all boats must display the appropriate class flag or ribbon from the backstay. (DP)**

**Note: For fleets flying ribbons, the appropriate ribbon will be provided to each boat in her Skippers Bag given out at Check-In Thursday.**