



**Lake Ontario 300 Challenge Race
Lake Ontario 600 Challenge Race**

Part of the

Ontario Sailing Offshore Keelboat

PHRF & ORC

Championships

July 09 – July 13, 2021

July 09 – July 17, 2021 (LO600)

Lake Ontario Offshore Racing of the Port Credit Yacht Club

& For LO300 Solo Challenge Races

Jointly with the Great Lakes Singlehanded Society (GLSS)

NOTICE OF RACE

Version V01.40 / 2021-06-30

With Amendments 1, 2, 3 & 4

Given the fluidity of the situation around COVID 19 that may extend to cover this event, LOOR may need to adjust protect the health and well being of racers, volunteers, and others. This may include limits on the number of sailboats and/or crew numbers, whether by sailboat or in total.

These will be done as amendments to the Notice of Race or Sailing Instructions and posted on the Official Notice Board.

Amendments

#	DATE	SECTION	CHANGE
1	2021-05-27	5.2	The date for increase in fees has been changed from May 31 st to July 16 th .
1	2021-05-27	5.5	Changed 60 days to 21 days.
1	2021-05-27	5.6	Change date to July 16 th .
1	2021-05-27	8.3	Added that meeting will be held virtually, with access details to be distributed at least 48 hours in advance.
2	2021-06-07	5.2	The fee increase as of June 16, 2021, has been removed.
2	2021-06-07	5.5	Has been replaced with: Payment in full is required by June 25, 2021. Registrations made after that date must include payment in full. Registrations without payment in full by that date will be removed.
3	2021-06-28	1.7.1	Deleted
3	2021-06-28	1.9	Updated to reflect submission of Log Form electronically as sailboats are no longer are required to come into PCYC after finishing.
3	2021-06-28	9.4	Deleted as electronic submission of <u>LOOR Combined Form</u> is sufficient for LO600 participants.
3	2021-06-28	11	Updated to reflect Canada only waters
4	2021-06-30	11	Updated MDC & LO600 Courses to remove waypoints. Corrected SBC course to avoid US waters

www.loor.ca

www.solosailors.org

The Registration and Race Document Web Site is

<https://yachtscoring.com/emenu.cfm?eid=13262>

See Figure 1 Where to find on the Registration and Race Document Web Site

page 21

For an Entry Checklist, see page 20

See Registration and Race Document Web Site – Additional Event Links (E) – for video link on how to register or <https://www.youtube.com/watch?v=sVS5DqzwR64&t=4s>

For PCYC Concussion Policy & Protocol (Rowan's Law) Links

The notation '[NP]' in a rule means that a boat may not protest another boat for breaking that rule. This changes RRS 60.1(a).

The Racing Rules of Sailing (RRS) 2021-2024 state that items, *Rules*, and the Notice of Race (NoR) do not have to be repeated in Sailing Instructions (SIs). Both the NoR and SIs describe the conduct of the event and need to be used jointly during the event.

1 The RULES

1.1 The event is governed by the rules as defined in The Racing Rules of Sailing.

1.2 The event is also governed by the following documents.

1.2.1 [DP] LOOR Offshore Special Regulations (OSR)

The event is a Category 3 Event under the World Sailing Offshore Special Regulations. Offshore Special Regulations for Category 3 with prescriptions from Sail Canada and amended by the Lake Ontario Offshore Racing apply, as documented in:

[LOOR Offshore Special Regulations for Category 3 Monohulls](#)

[LOOR Offshore Special Regulations for Category 3 Multihulls](#)

These are available on the [Registration and Race Document Web Site](#). See Figure 1 Where to find on the [Registration and Race Document Web Site](#) on page 21.

1.2.2 [DP] [NP] The event is governed by [PCYC's Visiting Yacht's Policy](#), including pre-registration for dockage, available under the link "Additional Event Links" on the [Registration and Race Document Web Site](#). See Figure 1 Where to find on the [Registration and Race Document Web Site](#) on page 21.

1.2.3 [DP] Ontario Environmental Protection Act Regulations #343, available here:

www.e-laws.gov.on.ca/html/regs/english/elaws_regs_900343_e.htm

1.3 The Racing Rule(s) will be changed as outlined below. The Sailing Instructions may also change other Racing Rules of Sailing (RRS).

1.3.1 RRS 28.1

Is changed as follows.

A boat shall *start* or be assessed the time penalty in 1.3.2, *sail the course* and then *finish* or be assessed the time penalty in 1.3.2, when any part of her hull crosses the finishing line from the course side, unless if after crossing the finishing line she

(a) takes a penalty under rule 44.2,

(b) corrects an error in sailing the course made at the line, or

(c) continues to sail the course.

While doing so, she may leave on either side a *mark* that does not begin, bound, or end the leg she is sailing. After *finishing* or being assessed the time penalty in 1.3.2, when any part of her hull crosses the finishing line from the course side, she need not cross the finishing line completely.

1.3.2 RRS 29.1, RRS 64.1 (a) and RRS Appendix A5

A sailboat that is OCS at the start of her class is assessed a 45-minute penalty. A sailboat starting six minutes before her Start Signal may be protested by the Race Committee, and the Protest Committee will apply an appropriate penalty if the sailboat is found to have infringed this. This changes RRS 29.1, RRS 64.1 (a) and RRS Appendix A5.

1.3.3 RRS 41 Outside Help

All forms of communication. Each sailboat may communicate with any person, competitor, sailboat, or outside source for information available using any means available throughout the race. This changes RRS 41.

1.3.4 RRS 42.3 Exceptions

An engine may be used for generating electrical power provided that such use does not advance the boat's position. This changes RRS 42.3.

1.3.5 RRS 51 Movable Ballast

Canting keels and water ballast are allowed, assuming the applicable class/measurement/handicap rules permit them. This changes RRS 51.

1.3.6 RRS 52 Manual Power

Is modified to allow canting keels and water ballast, assuming the applicable class/measurement/handicap rules permit them.

All movable ballast systems must be capable of manual operation if the powered systems are inoperable.

The use of power auto helm devices is allowed. This changes RRS 52.

1.3.7 RRS 60.1 (a)

Breaches of specific Sailing Instructions, as denoted in the Sailing Instructions by "[NP]", will not be grounds for a protest by a sailboat. This changes RRS 60.1 (a).

1.3.8 [NP] RRS 62 Redress

The Race Committee may announce sailboats subject to RRS 29.1.

The Race Committee may announce a sailboat's successful completion at the finish. This changes RRS 62.

1.3.9 RRS 64.2

For infringements of the rules other than Part 2, the Jury may award a lesser penalty than DSQ, unless stated otherwise in the Notice of Race or Sailing

Instructions. This changes RRS 64.2.

1.3.10 RRS A4 & A5

A sailboat not starting within 90 minutes of her starting signal will be scored DNF. This changes RRS A4 & A5.

1.3.11 Changes applicable to only Singlehanded (Solo Challenge) sailboats in the LO300 and all sailboats in the LO600, after finishing the LO300, i.e., for the second time around the course for the LO600.

1.3.11.1 [DP] RRS 41

A boat may anchor or tie to a dock.

Including when a boat is anchored or moored, the following are specifically prohibited:

(A) Any prearranged transmissions for the advantage of the Person in Charge.

(B) Communications with non-participants for the purpose of a position fix.

(C) Outside physical assistance, an example of which is to free a grounded boat.

(D) Materials, equipment or supplies of any sort shall not be taken aboard the boat.

(E) No materials shall leave the boat except that accidentally fall overboard or are supplied to others in distress.

If a Person in Charge feels that it is necessary to withdraw from the Challenge temporarily, he or she shall attempt to continue to be as self-sufficient as he or she would be if he or she were still on the course and remain on the boat except to attend to docking or address required customs and immigration.

This changes RRS 41.

1.3.11.2 RRS 42 Propulsion

(A) Engine propulsion may be used to avoid a collision with commercial traffic providing that such usage does not advance the boat's position from its original position just prior to the hazardous incident.

(B) A boat may temporarily withdraw from the Challenge. To safely enter or leave a harbour, and motoring from a minimum safe distance for the conditions is acceptable. Any motoring that would be necessary must not advance the sailboat's position.

(C) An engine may be used for generating electrical power provided that such use does not advance the boat's position.

(D) All uses of the engine for propulsion must be logged and reported to the Race Committee when checking in after finishing race.

(E) Engine propulsion may be used to clear seaweed or fish netting from the keel, rudder, or propeller if the use does not improve the boat's position.

This changes RRS 42.

1.4 Changes to Class Rules

1.4.1 ORC

1.4.1.1 ORC 102

The following is added at the end of 102.

Fully crewed rating is based on declared or default crew weight. The maximum crew weight in certificates is converted to head count instead of weighing a named list of crews on the basis of a nominal 85 kg or 187 lbs. per person. To comply, the owner is to determine the maximum crew weight for the purpose of the certificate on the basis of the anticipated number of crews.

1.4.1.2 ORC 209

The following is added at the end of 209.

The number of ORC permitted spinnakers shall be increased by one additional sail. ORC sail inventory excludes storm and heavy weather sails required by the LOOR Offshore Special Regulations for Category 3.

1.5 RRS Appendix RV, Reduced Visibility replaces RRS Part 2 from 0800 until 2000. This document is available on the Registration and Race Document Web Site under Documents & Forms.

1.6 RRS Appendix WP, Rules for Racing Around Waypoints applies when waypoints are used. This document is available on the Registration and Race Document Web Site under Documents & Forms.

1.7 Intentionally Left Blank

1.8 When rule 20 applies, a boat may indicate her need for room to tack or her response by VHF radio on channels 16 and 71 Canadian.

1.9 [DP] [NP] Sailboats are required to electronically submit the L0300 Race Log Form and Alternative Penalty Forms within 90 minutes of finishing. The L0300 Race Log Form is available at either of the Onsite Check-in or from the Registration and Race Document Web Site.

2 SAILING INSTRUCTIONS

2.1 The Sailing Instructions (SIs) will be available by July 1, 2021, on the Registration and Race Document Web Site.

3 COMMUNICATION

3.1 The online official notice board is located on the Registration and Race Document Web Site.

3.2 All boats shall carry a VHF radio capable of communicating on 16, 71

Canadian and as required by the LOOR Offshore Special Regulations (OSR)

- 3.3 On the water, the race committee will make courtesy broadcasts to competitors on VHF radio. The channel will be stated in the Sailing Instructions.

4 ELIGIBILITY AND ENTRY

- 4.1 The Event is open to any sailboat that meets one of the following stability measurements.

Precedence	Measurement	Minimum Value
1	ISO 12217-2 Category	B
2	STIX AVS	23 130-0.0005m, but always > 95°
3	ORC Stability Index	103
4	SSS Base Value	15

Where m is the Minimum Sailing Weight

For entries 2 through 4, the sailboat must have a Minimum Sailing Weight of 1500kg as well as the minimum value.

The Organizing Authority, upon application and subsequent review of the vessel's technical evidence, as supplied by the owner, may, at their sole discretion, accept or reject such vessel as suitable for this race. It is the responsibility of the owner to obtain and submit required technical evidence when requested by the Organizing Authority, to review a sailboat for its suitability including stability characteristics.

- 4.2 Eligible sailboats may be entered in the race by registering online at the Registration and Race Document Web Site.

- 4.3 [DP] [NP] Supporting documentation for a complete entry includes all information requested in the online entry, at the Registration and Race Document Web Site, as well as the following:

1. Payment of the entry fee(s) online by the date in 5.1.
2. The LOOR Sailboat and Person in Charge (PIC)/Skipper Release of Liability, Waiver of Claims, Assumption of Risks and Indemnity Agreement, Acceptance of Ontario Sailing's Concussion Protocol, and Agreement to act as the Designated Person for LOOR Events 2021 ("LOOR Sailboat and PIC Release") electronically signed by PIC/Skipper as part the online registration on the Registration and Race Document Web Site.
3. Stability, measurement, and value for 4.1, for the specific sailboat or for a sister ship, submitted by email to LO300@loor.ca within 48 hours of completion of the online registration.
4. Crew information filed and maintained electronically at the Registration and Race Document Web Site, i.e., Crew List. This

includes identification of the Person in Charge as per RRS 46 and compliance with the Sail Canada's prescription to RRS 46. The crew information shall accurately represent the crew onboard for the race. The Person in Charge shall update as necessary up to the start of the race. The Person in Charge and/or skipper are crew and must add/update their information in the Crew List. This includes all crew agreeing to LOOR Crew Release of Liability, Waiver of Claims, Assumption of Risks and Indemnity Agreement and Acceptance of Ontario Sailing's Concussion Protocol – Athletes and Participants for LOOR Events 2021 ("LOOR Crew Release") as part of the mandatory crew registration in the Crew's Corner on the Registration and Web Site.

The initial Crew List must be input by end of day of the Tuesday before the event.

Signed LOOR Crew Overboard Recovery Drill Certificate. The blank form is available at the Registration and Race Document Web Site. The completed form can be submitted by email to LO300@LOOR.CA by end of day of the Tuesday before the event, July 6, 2021, or at the Onsite Check-in.

Actual signatures of the crew are needed whether submitted by email or in-person.

5. Applicable, completed, and signed Lake Ontario Offshore Special Regulations Certificate & Sail Plan. These are available at the Registration and Race Document Web Site as LOOR Combined Form. The completed form must be submitted by email to LO300@LOOR.CA by end of day of the Tuesday before the event, July 6, 2021, or at the Onsite Check-in. The email address will be used as the signature of the PIC.

- 4.4 The race is open to monohull and multihull sailboats that meet the eligibility and entrance requirements.

Monohull sailboats Classes will be:

- Flying Sails (FS) and No Flying Sails (NFS) - Fully Crew (FC)
- Flying Sails (FS) and No Flying Sails (NFS) - Doublehanded (DH)
- Flying Sails (FS) - Solo Challenge/Single Handed (SH) only

Multihull Fleets will be:

- Fully Crew (FC) - Flying Sails (FS) only

Classes may be sub-divided into divisions based on handicap system and rating or One Design Classes. The Organizing Authority may assign sailboats to divisions and fleets based on the number of sailboats registered.

If sufficient sailboats in a one design class register, a fleet may be created

for them.

Sailboats participating in the LO600 shall participate and be scored in the LO300.

The following table lists the allowable classes by Course.

Monohull Classes

Classes	Main Duck Course (MDC)	Scotch Bonnet Course (SBC)	LO600
ORC Flying Sails with GPH rating of 781 or greater – Fully Crewed *	NA	Only	NA
ORC Flying Sails with rating between 761 and 780 inclusive – Fully Crewed *	Either	Either	NA
ORC Flying Sails with rating of 760 and smaller – Fully Crewed *	Only	NA	Yes (**)
ORC Flying Sails with rating of 760 and smaller – Double Handed Crewed *	Only	NA	Yes (**)
ORC No Flying Sails	NA	Only	NA
PHRF-LO No Flying Sails – Doublehanded	NA	Only	NA
PHRF-LO No Flying Sails – Fully Crewed	NA	Only	NA
PHRF-LO Flying Sails with rating of 184 or greater – Doublehanded	NA	Only	NA
PHRF-LO Flying Sails with rating of 184 or greater – Fully Crewed	NA	Only	NA
PHRF-LO Flying Sails with rating between 171 and 183 inclusive – Doublehanded	Either	Either	Yes
PHRF-LO Flying Sails with rating between 171 and 183 inclusive – Fully Crewed	Either	Either	Yes
PHRF-LO Flying Sails with rating of 170 and smaller – Doublehanded	Only	NA	Yes
PHRF-LO Flying Sails with rating of 170 and smaller – Fully Crewed	Only	NA	Yes

(*) These may be amended.

(**) Sailboats participating in LO600 must only use their PHRF-LO certificate sail inventory in the LO300 component of the LO600.

Multihull Classes

CLASSES	Main Duck Course (MDC)	Scotch Bonnet Course (SBC)	LO600
Multihull with Flying Sails only – Full Crewed	Only	NA	Yes

Solo Challenge/Single Handed Classes

Classes	Main Duck Course (MDC)	Scotch Bonnet Course (SBC)	LO600
Monohull with PHRF-LO Flying Sails rating over 183	Only	NA	NA
Monohull with PHRF-LO Flying Sails rating 183 and under	Only	NA	Yes

4.5 Required Handicap Certificates

Solo Challenge/Single-handed, Double-handed & Fully Crewed sailboats racing in:

GLMRA Multihull	Must have a valid GLMRA Certificate, see NoR 19
ORC	Must have a valid ORC Certificate, Club or International, see NoR 19
PHRF	Must have a valid PHRF-LO Certificate, see NoR 19

For sailboats racing under PHRF from outside the PHRF-LO area, arrangements shall be made in advance to obtain a PHRF-LO certificate. Contact PHRF-LO, www.phrf-lo.org.

4.6 [DP] Competitors' sailboats shall only display a sail number registered specific to the sailboat at the time of its commission. Requests, on the LOOR Combined Form, available on the Registration and Race Document Web Site, to display alternative sail numbers to the sailboat's commissioned sail number may be approved by the Organizing Authority and must be filed with the registrar prior to the Participants' Meeting.

4.7 [DP] [NP] Crew overboard procedures shall be practised aboard the yacht at least once annually. A certificate of such practice (Crew Overboard Recovery Drill Certificate available on the Registration and Race Document Web Site) shall be signed by crew members and submitted as part of the registration. (Refer to Appendix D of the World Sailing Offshore Special Regulations for more details on COB Recovery). At least 50% of the crew shall participate in the Crew Overboard Recovery Drill.

- 4.8 [DP] The Organizing Authority will provide each competitor with an event flag. The Sailing Instructions will define how the flag is to be flown in the harbour before the race and during the race.
- 4.9 [DP] Sailboats shall carry and use a tracker supplied by the Organizing Authority. The cost of the tracker rental is included in the Entry Fee. The trackers shall be picked up during check-in prior to the Participants' Meeting at 1900 EDT Friday, July 09, 2021. The use of trackers will be outlined in the Sailing Instructions.
- 4.10 [DP] Sailboats competing in the Solo Challenge must meet the eligibility requirements of the Great Lakes Singlehanded Society.
- 4.10.1 Shall be a member of the Great Lakes Singlehanded Society, or shall meet the following:
- 4.10.1.1 An entrant shall be 18 years of age or older and must have at least 1000 miles of sailing experience on a water body equal to or greater than the magnitude of Lake Ontario.
- 4.10.1.2 Submit a completed GLSS Sailing Experience Resume Form showing that they meet these qualification requirements to be provided for consideration and approval by the GLSS Board of Directors. The completed form needs to be received six weeks before the event, by May 21, 2021, at glss@loor.ca. The form is available on the Registration and Race Document Web Site, see Figure 1 Where to find on the Registration and Race Document Web Site on page 21.
- 4.10.1.3 In addition, new entrants shall document that they have made at least one nonstop singlehanded passage under sail on the boat being entered in the Challenge, covering no less than 100 statute miles, and requiring a passage time of no less than 24 hours. If a different boat is used for the solo qualification passage, a complete description of the type of boat is to be provided for GLSS Director for consideration and approval.
- 4.11 Competitors on the LO600 Course shall meet the following additional items.
- Racing in Fully Crewed – The Person in Charge shall have completed a previous year's LO300 Main Duck Island Course or similar race, minimum length of 270 NM, as the Person in Charge. Information on this race must be submitted to Organizing Authority.
- Racing in Double Handed – The Person in Charge shall have completed a previous year's LO300 Main Duck Island Course or similar race, minimum length of 270 NM, as the Person in Charge, racing Double Handed. Information on this race must be submitted to Organizing Authority.

5 FEES

- 5.1 For a registration to be complete, payment is required, and all other entry requirements, must be met or fulfilled.
- 5.2 Required fees are as follows and payable online:

All Sailboats

\$320.00 CAD +\$41.60 CAD HST = \$361.60 CAD

5.3 LO600 Additional Fee

\$105.00 CAD +\$13.65 CAD HST = \$118.65 CAD

5.4 The following fee will be added for reopening registration after the registration deadline has passed.

Reopen registration \$50.00 CAD +\$6.50 CAD HST = \$56.50 CAD

5.5 Payment in full is required by June 25, 2021. Registrations made after that date must include payment in full. Registrations without payment in full by that date will be removed.

5.6 LOOR will provide refunds as follows:

5.6.1 If registered and paid by July 16, 2021, and LOOR cancels the event, LOOR will retain \$60.00 CAD + HST to cover committed costs.

5.6.2 If registered and paid after July 16, 2021, and LOOR cancels the event, LOOR will retain \$100.00 CAD + HST to cover committed costs.

5.6.3 A 50% refund will be granted for requests received by LOOR by the end of day Friday July 2, 2021. No refunds will be provided after this. The retained amount covers incurred expenses.

5.6.4 Written requests must be sent by mail to LOOR LO300 c/o PCYC or emailed to LO300@loor.ca.

5.7 Solo Challenge Fees - all boats wishing to participate in the Solo Challenge shall pay a separate fee to GLSS. For details, see www.solosailors.org, including any refund policy. All the requirements for a complete GLSS entry must be completed by Friday, June 25, 2021.

6 CREW LIMITATIONS

6.1 The following limitations apply to crew, in addition to those in the applicable LOOR Offshore Special Regulations (OSR) and applicable class rules.

The Person in Charge is part of the crew, so all limitations, responsibilities and requirements on crew apply to the Person-in-Charge.

CREWING CLASSES	LIMITATIONS
ALL	<ul style="list-style-type: none"> All souls onboard are counted as crew.

Single Handed (Solo) (SH)	<ul style="list-style-type: none"> Person in charge, be 18 years of age or older.
Double Handed (DH)	<ul style="list-style-type: none"> All members of the crew, including person in charge, be 18 years of age or older.
Fully Crewed (FC)	<ul style="list-style-type: none"> The Person in Charge and at least one other crew shall be 18 years of age or older.

7 ADVERTISING

- 7.1 Sailboats may be required to display advertising chosen and supplied by the Organizing Authority.
- 7.2 Additionally, sailboats may carry advertising as permitted by Racing Rules of Sailing with no additional fee. The Organizing Authorities may reject any advertising that may conflict with any required advertising or with the interests of the Organizing Authorities or sponsors.

8 SCHEDULE

- 8.1 Registration online, at the Registration and Race Document Web Site until 2359 EDT, Wednesday, July 7, 2021, the registration deadline.
- 8.2 The Mandatory Event Onsite Check-in at PCYC
Start 1000 EDT, July 09, 2021
End 1745 EDT, July 09, 2021
- 8.3 [DP] [NP] The Mandatory Participants' Meeting is at 1900 EDT, Friday, July 09, 2021, at Port Credit Yacht Club. A representative from each sailboat shall attend this meeting and it is also open to all participants. The meeting will be held virtually, with access details to be distributed at least 48 hours in advance.
- 8.4 Class Organization (Splits) and starting sequences will be posted before 1000 EDT July 09, 2021, on the Official Notice Board. Preliminary versions may be posted before, at the Registration and Race Document Web Site.
- 8.5 The first warning signal for the Solo Challenge will be 1020 EDT, Saturday, July 10, 2021. The warning signal for others will be made after that.

9 EQUIPMENT INSPECTION

- 9.1 [DP] All sailboats shall be reviewed for the equipment listed in the applicable Lake Ontario Offshore Special Regulations, available at the Registration and Race Document Web Site. This review will be undertaken by the person in charge of the sailboat. A sailboat must successfully complete this review prior to the start of the race. Confirmation of this review is on the LOOR Combined Form, as described in 4.3 on page 8.
- 9.2 [DP] A sailboat may be inspected at any time during the period from the Mandatory Participants' Meeting until three hours after her finish. The Race

Committee may, at the finish of the race, direct a sailboat to proceed directly to a designated location at Port Credit Yacht Club. A boat, which fails to follow such directions, or which subsequently fails the inspection, may be protested by the Race Committee.

Any post race inspection will include verification that submitted Crew List matches the actual crew that raced.

- 9.3 [DP] At its sole discretion, the Race Committee may request a Pre-Race Inspection of a sailboat. This inspection would be conducted during the Mandatory Event Onsite Check-in. The Race Committee will provide 72-hour notice of this inspection, provided the sailboat has started registration before that time.

10 VENUE

- 10.1 The venue is the Port Credit Yacht Club (PCYC), 115 Lakefront Promenade, Mississauga, ON L5E 3G6. See www.pcy.net.

11 COURSES

- 11.1 Main Duck Island Course is a 304-nautical mile course on Lake Ontario, starting at Port Credit, then on to the Fogh LSYC Mark, Ajax Weather Buoy, M9, Ajax Weather Buoy, Burlington Weather Tower, AKA Van Wagners Beach Light, and the Finish. See Diagram 1 on page 18.
- 11.2 Scotch Bonnet Island Course is a 212-nautical mile course starting at Port Credit, then on to the Fogh LYSC Mark, Scotch Bonnet Island, Ajax Weather Buoy, Burlington Weather Tower, AKA Van Wagners Beach Light, and the Finish. See Diagram 2 on page 19.
- 11.3 The LO600 Course is 600-nautical miles, consisting of a "Twice Around" sailing of the LO300 Main Duck Island Course, with Mark 1 omitted on the second time around. See Diagram 1 on page 18. All yachts will complete the LO300 course, by crossing the finish line of the LO300 Course, being scored for the LO300 Race. Yachts will be scored for the LO300 Race regardless of whether they the finish the second lap of the LO600 Challenge. The LO600 Challenge shall be scored when the yachts cross the finish line at PCYC following the second lap of the course.

12 PENALTY SYSTEM

- 12.1 The Scoring Penalty, RRS 44.3, applies.

13 SCORING

- 13.1 Solo/Single-Handed (SH), Double-Handed (DH) & Fully Crewed (FC) sailboats racing under following rating/handicap systems:

Multihull	GLMRA Rule applies
ORC	Single number system using time on time ratings

PHRF-LO PHRF-LO Time on Time formula applies

13.2 Sailboats will be scored in their own classes.

13.3 The Organizing Authority reserves the right to adjust the scratch sailboat when converting the PHRF-LO Time on Distance to Time on Time based on the registrations received by the deadline. The Time-on-Time ratings will be published along with the division splits.

14 CHARTERED OR LOANED BOATS

14.1 A chartered or loaned boat may carry national letters or a sail number in contravention of her class rules, provided that the race committee has approved her sail identification before the first race. See RRS G3.

15 DATA PROTECTION

15.1 Photograph & Video Rights

15.1.1 DP] [NP] All pictures, audio and video recordings, graphic logos and service names contained herein or produced during the race by or on behalf of the Organizing Authorities or Port Credit Yacht Club, are the property of either the Organizing Authorities or Port Credit Yacht Club or their respective members. No rights are granted to use pictures, graphic logos, and service names without permission.

15.1.2 Registrants, competitors, and participants grant the Organizing Authorities or Port Credit Yacht Club (PCYC) the unrestricted right and permission to use the name and/or image for any text, photograph, or video footage of either themselves or the sailboat they are sailing during the event to be published or broadcast in any media whatsoever (including but not limited to press, TV, social media, or internet), for either editorial or advertising purposes or to be used in press information.

16 RISK STATEMENT

By participating in this event each competitor agrees and acknowledges that sailing is a potentially dangerous activity with inherent risks. These risks include strong winds and rough seas, sudden changes in weather, failure of equipment, boat handling errors, poor seamanship by other boats, loss of balance on an unstable platform and fatigue resulting in increased risk of injury. Inherent in the sport of sailing is the risk of permanent, catastrophic injury or death by drowning, trauma, hypothermia, or other causes. By participating in this event, each competitor agrees to release the race organizers from all liability associated with such competitor's participation in this event to the fullest extent permitted by law.

17 INSURANCE

17.1 [DP] [NP] Each participating boat shall be insured with a valid third-party liability insurance policy with a minimum coverage of \$2,000,000 CAD per event for Canadian sailboats and an adequate level of third-party liability

insurance applicable in Canadian and US waters for non-Canadian sailboats.

18 PRIZES

18.1 Details on Flag and Awards ceremony will be announced later.

18.2 A list of the trophies awarded, their eligibility requirements, and selection methodology are available at www.loor.ca. Details on the Awards Event will be available at a later date.

18.3 To be eligible for the Ontario Sailing's Offshore Keelboat PHRF-LO or ORC Championship, the sailboat must be representing an Ontario yacht club that is a member of Ontario Sailing/Sail Canada and race in both the Susan Hood Trophy Race and the Lake Ontario 300 Challenge Race.

19 FURTHER INFORMATION

ORGANIZING AUTHORITY CONTACTS

LOOR

LOOR	info@loor.ca
LO300/LO600	LO300@loor.ca
Safety	Safety@loor.ca
Registration	LO300@loor.ca
Race Committee	Racecommittee@loor.ca

GREAT LAKES SINGLEHANDED SOCIETY (GLSS)

GLSS	glss@loor.ca
------	--

HANDICAP SYSTEMS CONTACTS

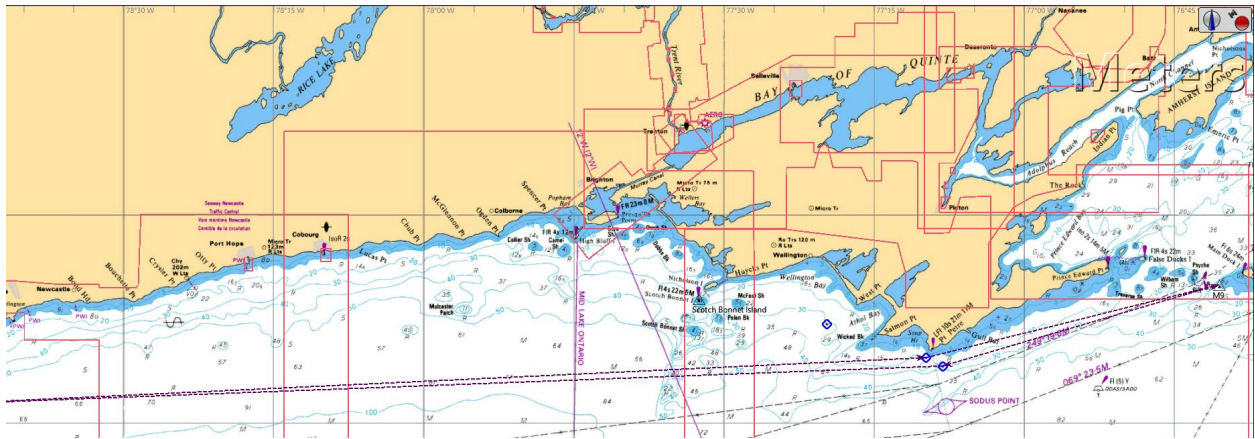
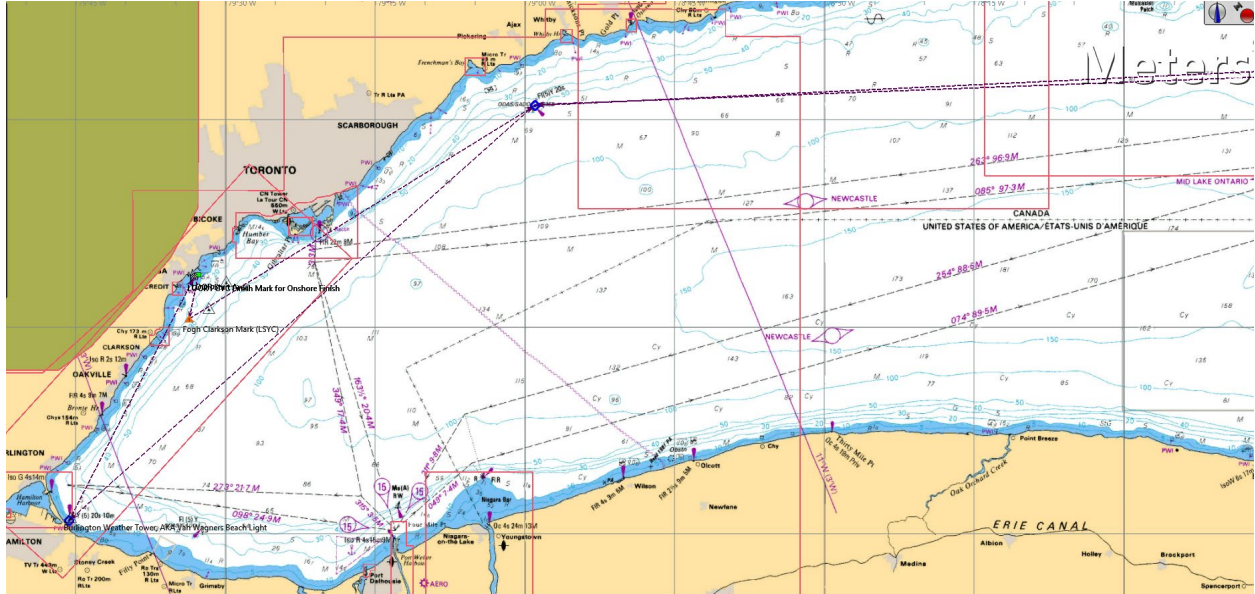
GLMRA	Racecommittee@loor.ca
-------	--

ORC

PHRF-LO	Contact your club's PHRF-LO Handicapper or see www.phrf-lo.org
---------	---

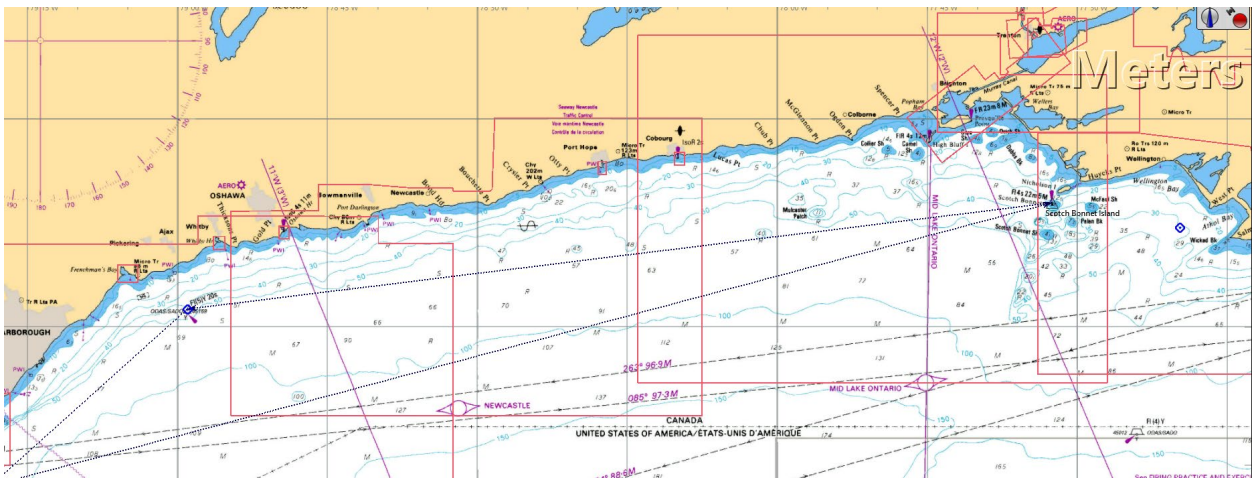
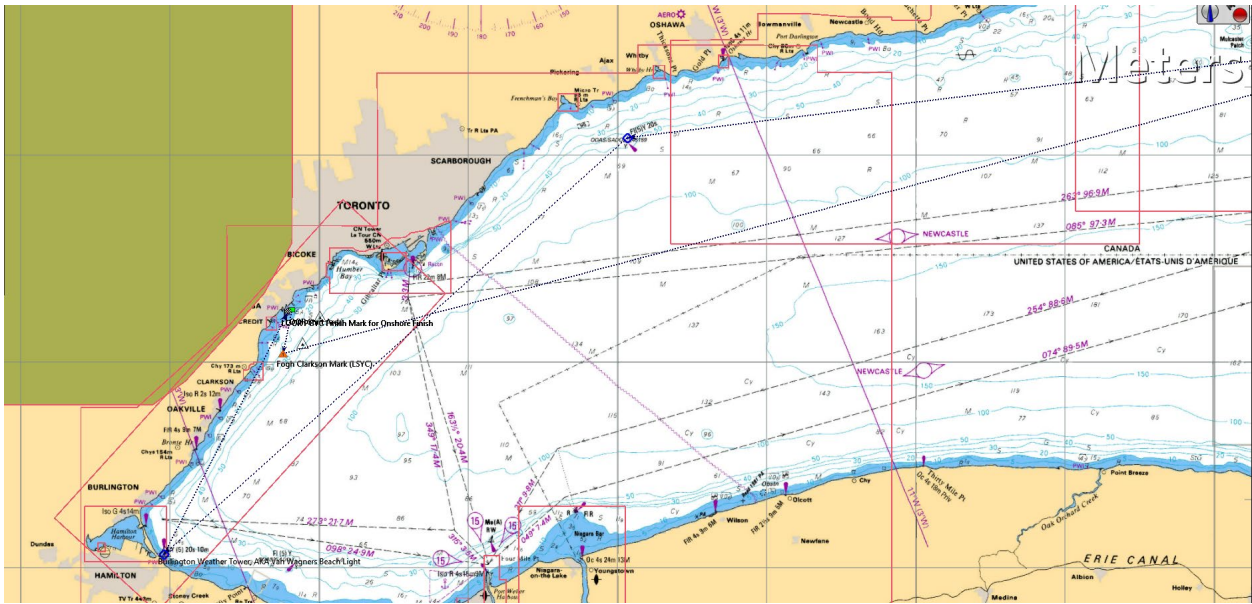
COURSES

Diagram 1 Main Duck Island Course



Not be used for navigation.

Diagram 2 Scotch Bonnet Island Course



Not be used for navigation.

**Lake Ontario 300 Challenge Race
&
Ontario Sailing Offshore Keelboat
PHRF & ORC Championships**

July 09 – 13, 2021

ENTRY CHECKLIST

(For Information only and are not part of the Rules of the NoR)

www.loor.ca

www.solosailors.org

The Registration and Race Document Web Site is

<https://yachtscoring.com/emenue.cfm?eid=13262>

Please refer to the Notice of Race, at Registration and Race Document Web Site, for official requirements and applicable deadlines.

Please ensure eligibility under the Racing Rules of Sailing (RRS), as extracted from the RRS below:

“46 PERSON IN CHARGE

A boat shall have on board a person in charge designated by the member or organization that entered the boat. See rule 75.

SAIL CANADA prescribes that the designated person in charge, if resident in Canada, shall be a member of a club affiliated with SAIL CANADA.

75 ENTERING A RACE

To enter a race, a boat shall comply with the requirements of the organizing authority of the race. She shall be entered by

- (a) a member of a club or other organization affiliated to a World Sailing member national authority,
- (b) such a club or organization, or
- (c) a member of a World Sailing member national authority.”

For a Person in Charge, who is an Ontario resident but is not a member of a Sail Canada yacht club, they can contact Ontario Sailing, www.ontariosailing.ca, to purchase a ‘Maple Leaf Fund Right to Race Card’.

Potential registrants should review RRS 3.

Guidelines for completing the registration and entry process:

The Registration and Race Document Web Site is
www.yachtscoring.com/emenu.cfm?eid=13262

- A** Click here for NOR
- B** Click here for SIs
- C** Click here for RC Announcements
- D** Click here for other documents, i.e., LOOR OSR, Splits, etc.
- E** Click here for link to other associated web sites, i.e., book dock at PCYC, etc.

Figure 1 Where to find on the Registration and Race Document Web Site

For help on registration, see video at
<https://www.youtube.com/watch?v=sVS5DqzwR64&t=4s>

#	Requirement	How	Comments
1.	Registration	On the <u>Registration and Race Document Web Site</u>	
2.	<u>LOOR Release</u>	Electronically signed by individual submitting the online registration	
3.	Payment	On the <u>Registration and Race Document Web Site</u>	
4.	Stability data	By email to LO300@loor.ca	

5.	Crew information	On the <u>Registration and Race Document Web Site</u>	<p>Must reflect current information for actual crew participating in the race.</p> <p>The Person in Charge, AKA skipper, is crew and must add/update their information in the <i>Crew List</i>.</p> <p>Use <u>Registration and Race Document website</u> to create logon entries for crew so they can input their information.</p>
6.	LOOR Crew Overboard Recovery Drill Certificate	<p>Download from <u>Registration and Race Document Web Site</u>, click on link shown by (D) above.</p> <p>The completed form can be submitted by email to LO300@LOOR.CA by end of day of the Tuesday before the event or at the Onsite Check-in.</p> <p>Actual signatures of the crew are needed whether submitted by email or in-person.</p>	
7.	Signed LOOR Offshore Special Regulations (OSR) Certificate & Sail Plan	<p>Download from <u>Registration and Race Document Web Site</u>, available as <u>LOOR Combined Form</u>, click on link shown by (D) above.</p> <p>The completed form can be submitted by email to LO300@LOOR.CA by end of day of the Tuesday before the event or at the Onsite Check-in. The email</p>	

		address will be used as the signature of the PIC.	
8.	<u>GLSS Sailing Experience Resume Form, if required</u>	Download from <u>Registration and Race Document Web Site</u> , available as <u>GLSS Sailing Experience Resume Form</u> , click on link shown by (D) above. The completed form must be submitted by email to LO300@LOOR.CA . by Friday, May 21, 2021	Only required by Solo/Single Handed Sailors if not a member of GLSS.

PCYC Concussion Policy & Protocol (Rowan's Law) Links

- Ontario Ministry provided Concussion Resources
www.ontario.ca/page/rowans-law-concussion-awareness-resources
- Ontario Sailing Concussion Code of Conduct – Athletes and Participants
www.ontariosailing.ca/wp-content/uploads/2019/06/OS-Concussion-Code-of-Conduct-Athlete.pdf
- Ontario Sailing Concussion Management & Return to Play
www.ontariosailing.ca/wp-content/uploads/2019/10/OS-Concussion-Management-Policy-V2-August-2019.docx.pdf