



**2021 Viper 640
North American Championship
October 7-10, 2021
Darien, CT**
Organizing Authority (OA): Noroton Yacht Club



SAILING INSTRUCTIONS

The notation '[DP]' in a rule in the notice of race (NoR) or sailing instructions (SIs) means that the penalty for a breach of that rule may, at the discretion of the protest committee, be less than disqualification. This changes RRS 60.1(a). All times are US Eastern time.

1 RULES

- 1.1 The event is governed by the rules as defined in *The Racing Rules of Sailing*.
- 1.2 The US Sailing Prescriptions that apply are stated in Notice of Race (NoR) Addendum A.

2 CHANGES TO SAILING INSTRUCTIONS

- 2.1 Any change to the sailing instructions will be posted no later than 90 minutes before the scheduled warning signal for the first race on the day it will take effect, except that any change to the schedule of races will be posted by 2000 on the day before it will take effect.

3 COMMUNICATIONS WITH COMPETITORS

- 3.1 Notices to competitors will be posted on the official notice board which is online and located at <https://yachtscoring.com/emenu.cfm?eid=13222>.
- 3.2 The race office is in the Regatta Room at Noroton Yacht Club. The race office can also be reached by email at raceoffice.viper640nac@gmail.com or by phone at 410.929.1481.
- 3.3 On the water, the race committee intends to monitor and communicate with competitors on VHF radio channel 71. Noroton Yacht Club Dockhouse monitors VHF channel 72 for launch services and other communications.
- 3.4 [DP] While racing, except in an emergency, a boat shall not make voice or data transmissions and shall not receive voice or data communication that is not available to all boats.

4 CODE OF CONDUCT

- 4.1 [DP] Competitors and support persons shall comply with reasonable requests from race officials. Reasonable actions by event officials to implement COVID-19 guidance, protocols, or legislation, even if they later prove to have been unnecessary, are not improper actions or omissions.

5 SIGNALS MADE ASHORE

- 5.1 Signals made ashore will be displayed from the flagpole on the Club Terrace.
- 5.2 When flag AP is displayed ashore, '1 minute' is replaced with 'not less than 60 minutes' in Race Signals AP.
- 5.3 [DP] Boats shall not leave the harbor, mooring, or dock until Flag D is displayed. Flag D with one sound means 'Boats may leave the harbor, mooring, or dock. The warning signal will not be made before the scheduled time or less than 60 minutes after flag D is displayed.'

6 SCHEDULE OF RACES

6.1 The schedule is:

Friday October 1	1200-1800	Equipment Inspection
Sunday October 3	1200-1800	Equipment Inspection
Wednesday October 6	1000–1700 1300	Equipment Inspection and Registration Practice Racing followed by debrief
Thursday October 7	0900 1100	Competitors' Meeting First Warning Signal
Friday October 8	0900 1100	Competitors' Meeting First Warning Signal
Saturday October 9	0900 1100	Competitors' Meeting First Warning Signal
Sunday October 10	0900 1100 1500 After racing	Competitors' Meeting First Warning Signal No Warning Signal after this time Awards

6.2 Three to four races per day for a total of 12-16 races are scheduled, dependent on weather conditions and judgement of the race committee.

7 CLASS FLAGS

7.1 The class flag is the Viper class symbol against a white background.

8 RACING AREA

8.1 The racing area will be approximately 1 to 2 miles SE to SW of G "1" at the mouth of Darien Harbor.

9 COURSES

9.1 SI Addendum 1 shows the courses, including the approximate angles between legs, the order in which marks are to be passed, and the side on which each mark is to be left.

9.2 No later than the warning signal, the race committee signal vessel will display the course and approximate compass bearing of the first leg.

10 MARKS

10.1 The starting and finishing marks will be race committee vessels or a green tetrahedron.

10.2 Marks 1, 1a, 2, 2s, 2p, and 3 will be orange tetrahedrons.

10.3 New marks, as provided in SI 12, will be yellow tetrahedrons.

11 THE START

11.1 Races will be started using RRS 26.

11.2 The starting line is between a staff displaying an orange flag on the race committee vessel and either the course side of the starting mark or a staff displaying an orange flag on race committee vessel at the other end of the starting line.

11.3 If any part of a boat's hull is on the course side of the starting line at her starting signal and she is identified, the race committee will attempt to hail her sail number. Boats may not base a request for redress on the failure to hail her number, failure of her to hear such a hail, or the order in which boats are hailed. This changes RRS 62.1(a).

11.4 A boat that does not start within 10 minutes after her starting signal will be scored Did Not Start without a hearing. This changes RRS A5.1 and A5.2.

12 CHANGE OF THE NEXT LEG OF THE COURSE

12.1 To change the next leg of the course, the race committee will lay a new mark (or move the finishing line) and remove the original mark as soon as practicable. New marks set after a CHANGE OF COURSE (either direction or length) will be a yellow tetrahedron. When in a subsequent change a new mark is replaced, it will be replaced by an original mark.

13 THE FINISH

13.1 The finishing line is between a staff displaying a blue flag on the race committee vessel and either the course side of the finishing mark or a staff displaying a blue flag on race committee vessel at the other end of the finishing line.

14 PENALTY SYSTEM

14.1 RRS/US Appendix V, Alternative Penalties, will apply (see NoR Addendum A).

15 TIME LIMITS [AND TARGET TIMES]

15.1 The time limit for a race (see RRS 35) will be 75 minutes.

15.2 The finishing window (the time for boats to finish after the first boat sails the course and finishes) will be 15 minutes. Boats failing to finish within the finishing window, and not subsequently retiring, penalized, or given redress, will be scored Time Limit Expired (TLE) without a hearing. A boat scored TLE shall be scored points for the finishing place two more than the points scored by the last boat that finished within the finishing window, but no worse than points for DNF. This changes RRS 35, A5.1, A5.2 and A10.

16 HEARING REQUESTS

16.1 The protest time limit is 60 minutes after the race committee signal vessel docks. The time will be posted on the official notice board.

16.2 Hearing request, scoring inquiry, and penalty acceptance forms are available at the race office, and on the notice board (see "General Race Forms"). They shall be delivered to the race office in person or by email (see SI 3.2). Hearing requests and scoring inquiries may also be submitted online via the "Owner's Corner" link at <https://yachtscoring.com/emenu.cfm?eid=13222>.

16.3 When the race committee receives a scoring inquiry form, it will review its records and respond as soon as practicable. A request for redress based on an incident identified in a scoring inquiry will meet the time limit if the scoring inquiry is delivered within the protest time limit and the request for redress is delivered as soon as reasonably possible after being notified of the race committee's response (in writing or through the online system) to the scoring inquiry. This changes RRS 62.2.

16.4 Notices will be posted no later than 30 minutes after the protest time limit to inform competitors of location and schedule of hearings in which they are parties or named as witnesses. Hearings may be held in person or via tele- or video- conference.

16.5 The race committee will post a list of race committee scoring actions no later than the protest time limit.

16.6 The protest committee may impose penalties less than disqualification, for a violation of the class rules and racing rules other than those of RRS Part 1 and Part 2.

16.7 There shall be no appeal of decisions of a protest committee when it is an international jury in accordance with RRS Appendix N.

17 SCORING

17.1 RRS A5.3 will apply.

17.2 Two races are required to be completed to constitute a series.

17.3 When fewer than six races have been completed, a boat's series score will be the total of her race scores. When six or more races have been completed, a boat's series score will be the total of her race scores excluding her worst score.

18 SAFETY REGULATIONS

18.1 [DP] A boat that retires from a race shall notify the race committee at the first reasonable opportunity.

19 REPLACEMENT OF CREW OR EQUIPMENT

- 19.1 [DP] Substitution of competitors is not allowed without prior written approval of the race committee.
- 19.2 [DP] Substitution of damaged or lost equipment is not allowed unless authorized in writing by the race committee. Requests for substitution shall be made to the committee at the first reasonable opportunity, which may be after the race.

20 EQUIPMENT AND MEASUREMENT CHECKS

- 20.1 A boat or equipment may be inspected at any time for compliance with the class rules, notice of race and sailing instructions.
- 20.2 [DP] When instructed by a race official on the water, a boat shall proceed to a designated area for inspection.

21 [DP] SUPPORT TEAMS

- 21.1 Support person vessels shall register with the race office but are not required to fly a flag. This changes NoR 13.1.
- 21.2 On race days, support vessels may not communicate any information to competitor boats that could affect performance or racing, from the moment the team leaves the dock or mooring until the end of racing for the day. See class rule 10.5.
- 21.3 Support vessels may not provide provisions or equipment to competitors without express permission from the race committee.
- 21.4 Support vessels shall carry a VHF radio, monitor race committee communications, and, if called upon, be available for safety assistance.
- 21.5 Team leaders, coaches and other support persons shall stay outside areas where boats are racing from the time of the preparatory signal for the first start until all boats have finished or retired or the race committee signals a postponement, general recall, or abandonment.

22 TRASH DISPOSAL

- 22.1 Trash may be placed aboard official or support person vessels.

23 BERTHING

- 23.1 [DP] Boats shall be kept in their assigned places while in the dry sailing area or on moorings. Boats will be allowed to haul out every other night. Haul out schedules will be distributed at registration and posted on the notice board.

24 PRIZES

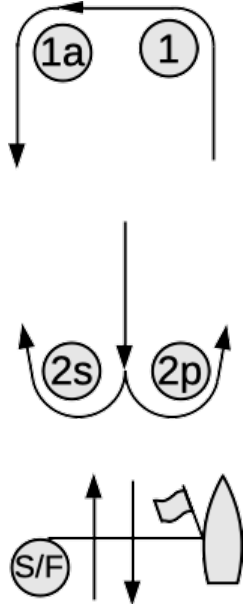
- 24.1 Prizes will be awarded in accordance with the NoR. Additional prizes may be awarded at the discretion of the organizing authority.

25 RISK STATEMENT

- 25.1 RRS 3 states: 'The responsibility for a boat's decision to participate in a race or to continue to race is hers alone.' By participating in this event each competitor agrees and acknowledges that sailing is a potentially dangerous activity with inherent risks. These risks include strong winds and rough seas, sudden changes in weather, failure of equipment, boat handling errors, poor seamanship by other boats, loss of balance on an unstable platform and fatigue resulting in increased risk of injury. Inherent in the sport of sailing is the risk of permanent, catastrophic injury or death by drowning, trauma, hypothermia or other causes.

SI Addendum 1 - COURSES

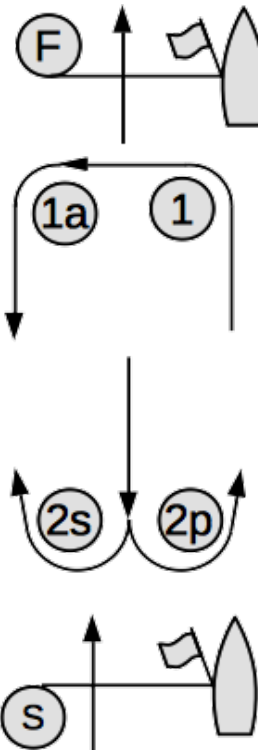
LA



LA2: Start-
1-1a-2s/2p-
1-1a-Finish

LA3: Start-
1-1a-2s/2p-
1-1a-2s/2p-
1-1a-Finish

WA



WA2: Start-
1-1a-2s/2p-Finish

WA3: Start-
1-1a-2s/2p-
1-1a-2s/2p-
Finish