

2015

## Wednesday Night Series Sailing Instructions

Presented by Indian Harbor Yacht and Old Greenwich Yacht Clubs



**RULES** Races will be governed by the current Racing Rules of Sailing. US Sailing Prescription Appendix T, Sections A, B and D will apply (see below).

**ELIGIBILITY** Only registered boats with a 2015 YRALIS PHRF certificate will be eligible for Prizes. Boats without a 2015 PHRF certificate will be assigned a rating by the Race Committee.

**ENTRY** All boats shall register via Yacht Scoring ([www.yachtscoring.com](http://www.yachtscoring.com)).

CLASSES	Class	PHRF Band	Class Flag
	I	PHRF < 84	Numeral pennant 1
	II	PHRF 84 to 145	Numeral pennant 2
	III	PHRF > 146 to 175	Numeral pennant 3
	IV	PHRF > 175	Numeral pennant 4

**SAILS** No spinnakers, gennikers or bloopers. No more than one sail at any time in the fore triangle except during a seamanlike sail change.

**SCHEDULE** 1855 scheduled first warning every Wednesday from May 13<sup>th</sup> until August 26<sup>th</sup>.  
1825 scheduled first warning September 2<sup>nd</sup>.  
Wednesday September 9<sup>th</sup>: Prize night gathering @ IHYC's Sunfish Bar (BBQ weather permitting)

**RACING AREA** Races will be held inside Captains Harbor.

**MARKS** Marks are described in Addendum A.

**COURSES** Pre-configured courses (Addendum B) will be signaled by a letter beneath the class number on the Committee Boat. Classes without a course designation beneath their class number shall sail the course of the next faster rated class to have a course.

Once the courses are posted, the Race Committee may not signal a different course without indicating the new course by hoisting "L" with one sound signal and via VHF hailing on Channel 72.

The Race Committee may signal twice around by adding a "2" under the course letter. When twice around is indicated, mark T is not part of the course until the finish. For example, if Course A is B-X-Finish, then Course A2 is B-X-B-X-Finish (T).

**THE START** The start line will be between a yellow flag on the RC boat and an adjacent mark. Race Committee may choose to start different classes together. The starting sequence will be in accordance with RRS 26. Below is the expected timing. Note however that the Race Committee may introduce a break between starts without postponing.

6:54	Optional Courtesy Signal	A series of short blasts (time is approximate)
6:55	Class I Warning	1 sound – raise Class I flag
6:56	Class I Preparation	1 sound – raise P flag (or I, Z or black flag)
6:59	One minute	1 long sound - drop P flag (or I, Z or black flag)
7:00	Class I Start/Class II Warning	1 sound - drop Class I flag/raise Class 2 flag
7:01	Class II Preparation	1 sound – raise P flag (or I, Z flag or black flag)
7:04	One minute	1 long sound - drop P flag (or I, Z flag or black flag)
7:05	Class II Start/Class III Warning	1 sound - drop Class II flag/raise Class III flag
7:06	Class III Preparation	1 sound – raise P flag (or I, Z flag or black flag)
7:09	One minute	1 long sound - drop P flag (or I, Z flag or black flag)
7:10	Class Start	1 sound - drop Class III flag

**THE FINISH** The finish line will be between a yellow flag on the RC boat and an adjacent mark. Competitors are reminded to finish by crossing the finish line from the course side (in the direction of the last mark). This also applies to courses that have been shortened.

**TIME LIMIT** 2045 hours for all Classes. Boats that do not finish within the time limit shall be scored TLE.

<b>SHORTEN COURSE</b>	Races may be shortened per rule 32 except that races may not be shortened at the first turning mark.
<b>PENALTIES WHILE RACING</b>	The first two sentences of rule 44.1 are changed to: ‘A boat may take a One-Turn Penalty when may have broken a rule of Part 2 or rule 31 while racing. However, when she may have broken a rule of Part 2 while in the zone around a mark other than a starting mark, her penalty shall be a Two-Turns Penalty.’
<b>PROTESTS</b>	Boats shall announce their intention to protest or any penalty turns taken via VHF #72 when they finish and repeat such announcements until acknowledged by the Race Committee. Protests shall be in writing and delivered to either sponsoring club's Race Committee (or its designee), no later than 2 hours after finishing (the “protest time limit”).
<b>POST-RACE PENALTIES</b>	After a race, a boat that may have broken a rule of Part 2 or rule 31 while racing may take a Post-Race Penalty for that incident. The penalty shall be a Scoring Penalty, calculated as stated in rule 44.3(c). However, rules 44.1(a) and (b) apply. The Post-Race Penalty shall be (a) 20%, if taken before the protest time limit, or (b) 30%, if taken after the protest time limit but before the beginning of a hearing involving the incident. A boat’s penalty will be based on the number of starters in that race in her division times the penalty rounded to the nearest whole number. See Addendum C for an example.
<b>PROTEST ARBITRATION</b>	Per Appendix T, Section D, arbitration will be held prior to a protest hearing subject to the terms of the Section.
<b>SCORING</b>	Series scores will be based on a high point percent-of-perfection scoring system. Race results will be scored based on time-on-time and use YRA of LIS PHRF non-spinnaker ratings. Only boats that start will be scored. Boats scored TLE will be awarded points equal to the number of boats the finished within the time limit minus two but not less than zero. A boat will qualify for the series by racing 50% of the races sailed rounded down. Up to two races above the number required to qualify will be thrown out for scoring purposes.
<b>RADIO USE</b>	The committee will monitor and broadcast on VHF channel 72.
<b>PRIZES</b>	Requires 2015 YRALIS PHRF certificate to be eligible.  At the last Twilight post racing Barbeque, IHYC will award class prizes 1 <sup>st</sup> through 3 <sup>rd</sup> place to all qualified boats.  At the IHYC Awards dinner, IHYC will award class prizes for 1 <sup>st</sup> through 3 <sup>rd</sup> based on rescoring IHYC boats only, The Doremus Trophy to the boat that in the opinion of the flag officers (or their designee) has demonstrated the most outstanding performance. Old Greenwich Yacht Club will award class prizes for 1 <sup>st</sup> through 3 <sup>rd</sup> based on rescoring OGYC boats only. The Commodore Kannenberg Trophy will be awarded to the best overall OGYC member finisher.

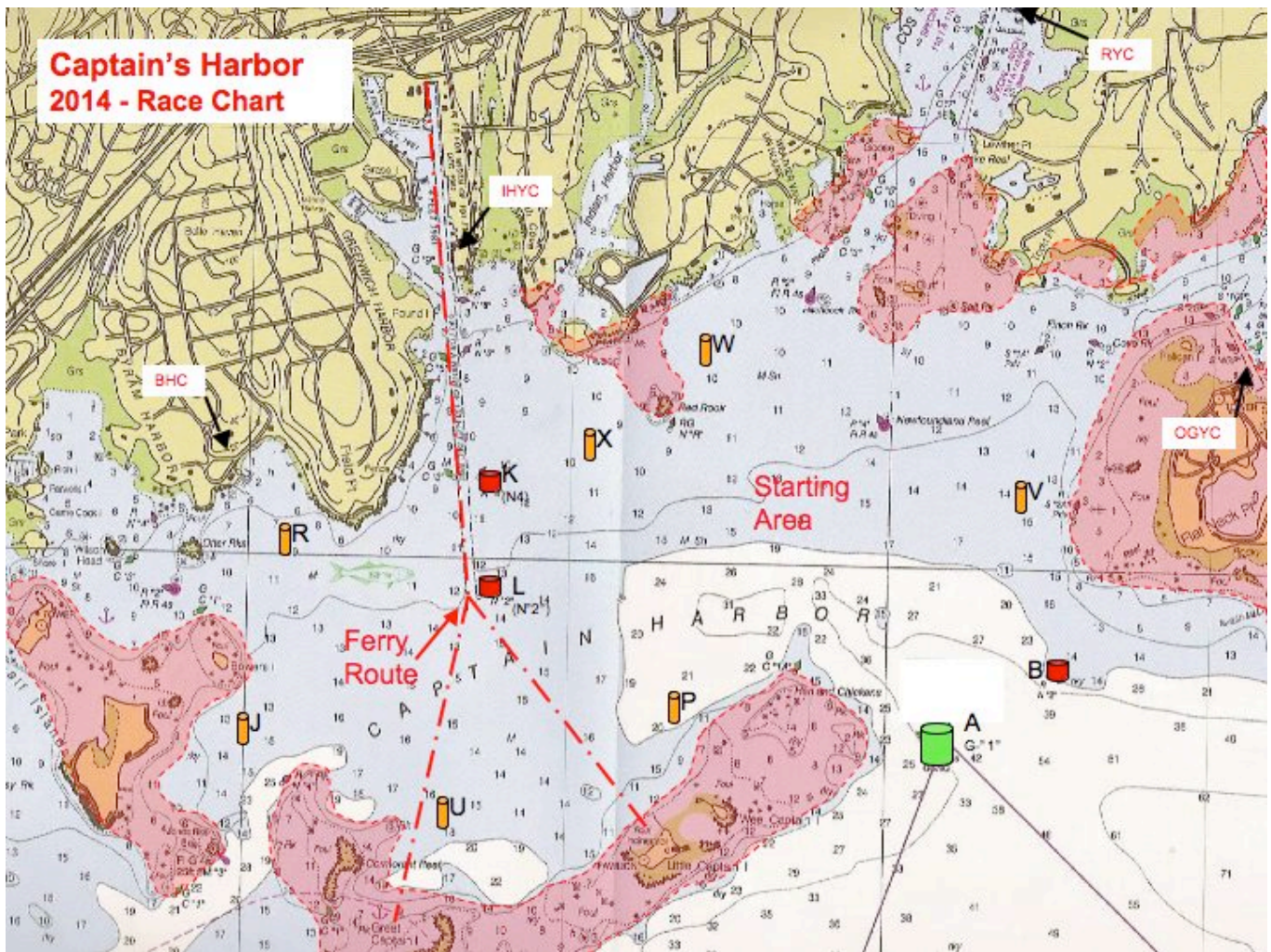
---

**Appendix T, Section D Arbitration**

*When Section D applies, a boat may take the applicable Post-Race Penalty in Section B without participating in an arbitration meeting.*

**T5 PROTEST ARBITRATION**

- T5.1** An arbitration meeting will be held prior to a protest hearing for each incident resulting in a *protest* by a boat involving a rule of Part 2 or rule 31, but only if each *party* is represented by a person who was on board at the time of the incident. No witnesses will be permitted. However, if the arbitrator decides that rule 44.1(b) may apply or that arbitration is not appropriate, the meeting will not be held, and if a meeting is in progress, it will be closed.
- T5.2** Based on the evidence given by the representatives, the arbitrator will offer an opinion as to what the protest committee is likely to decide:
  - (a) the *protest* is invalid,
  - (b) no boat will be penalized for breaking a rule, or
  - (c) one or more boats will be penalized for breaking a rule, identifying the boats and the penalties.
- T5.3** A boat that may have broken a rule may take a Post-Race Penalty as provided in Section B. However, the penalty in rule T2.2(a) is available only until the protest time limit or until the beginning of the arbitration meeting, whichever is earlier. During a meeting, a boat may take a penalty by acknowledging her acceptance of the penalty in writing.
- T5.4** If a boat asks to withdraw her *protest*, the arbitrator may act on behalf of the protest committee in accordance with rule 63.1 to accept the withdrawal



Exceptions on the racing chart, Addendum A is modified to say:

- (1) Marks D, K & L, may be passed on either hand when not used as turning marks.
- (2) Can C-3, west of Mark K and Nun 2, Flat Neck Point (Mark B) may be disregarded and left on either hand.
- (3) The channel between Cormorant Reef and Great Captain Island shall not be used.
- (4) Red Rock buoy & New Foundland Reef buoy shall be passed on the South Side.
- (5) Hen & Chicken Can C-1A shall be passed on the North Side.
- (6) The passage between Great Captain & Little Captain Islands shall not be used.

The description of Mark T is changed to read "Start/finish mark".

The description of Mark Y is changed to read "Inflatable dropped mark to windward of the start".

A	Bell "G-1" flasher) Little Captain Island E. Reef.	J	Special IHYC Mark off Calf Island.	P	Special RYC Mark North of Wee Captain Island.	V	Special RYC Mark West of Sugar Boat.
B	Red Nun "2", Flat Neck Point.	K	Red Nun "4", Greenwich Harbor.	Q	Special Mark approximately 1/4 mi. to leeward of start.	W	Special RYC Mark 1/4 mi. ENE of Red Rock.
C	Special Mark approx. 1 1/2 mi. to windward of Start. RC may Indicate magnetic bearing.	L	Red Nun "2". Greenwich Harbor.	R	Special BHC Mark off the Belle Haven Club	X	Special IHYC Mark SW of Tweed Island.
D	Red Gong "32-A" (flasher) LIS Mid-Channel Buoy.	M	Special reaching Mark , positioned on a line which is an extension of the starting line.	S	Special Mark approximately 3/4 mi. to windward of the start RC may indicate magnetic bearing.	Y	Special Mark approximately 1/2 mi. to windward of start RC may indicate magn. Bearing.
G	Red Bell "36" Bluefish Shoal.	N	Special Mark approximately 1/2 mi. to leeward of the start.	T	Start & Finish line Mark, adjacent to RC Signal boat, may also be used as Special Mark.	Z	Special Mark approximately 1 mi. to windward of start. RC may indicate magn, bearing.
H	Red Nun "2", Great Captain Island West Reef.	O	Special Mark approximately 100 ft. windward of the starting line.	U	Special IHYC Mark NNE of Great Captain Island Light.		

## ADDENDUM B

						For R/C Only	
Course Name	Marks & Rounding Order	Round (leave) all Marks to	Wind is from the	Start area		Finish Direction	2x OK
				east end	west end		
A	B X	Port	Southeast	2.5	2.5	Upwind	Yes
AT	B X T X	Port		3.5	3.5	Upwind	No
B	B V X	Port		2.7	2.7	Upwind	Yes
D	A V	Port	South	1.5	1.5	Reach	No
E	A V W	Port	180	2.5	2.5	Upwind	Yes
F	A W	Port		2.0	2.0	Upwind	Yes
FT	A W T W	Port		2.8	2.8	Upwind	No
G	P L	Starboard	Southwest	2.0	2.0	Reach	No
GT	P L T P	Starboard	225	4.0	4.0	Downwind	No
H	U L	Starboard		2.6	2.6	Reach	No
HT	U L T U	Starboard		5.2	5.2	Downwind	No
J	L V	Port	West	2.5	2.5	Upwind	Yes
K	L P	Port		2.0	2.0	Reach	No
KT	L P T L	Port		3.5	3.5	Downwind	No
L	L U	Port		2.7	2.7	Reach	No
LT	L U T L	Port		3.75	3.75	Downwind	No
M	J V	Port		4.0	4.0	Upwind	Yes
N	X B	Port	Northwest	2.5	2.5	Upwind	Yes
NT	X B T B	Port		3.5	3.5	Upwind	No
OT	X L B T B	Port		4.6	4.6	Upwind	No
P	Y B	Port		1.5	1.5	Upwind	Yes
R	W A	Starboard	North	2.0	2.0	Upwind	Yes
S	W V A	Starboard		2.3	2.3	Upwind	Yes
ST	W A T A	Port		3.4	3.4	Upwind	No
U	Y P	Port	Northeast	1.5	1.5	Upwind	Yes
UT	Y P T P	Port	45	3.0	3.0	Upwind	No
V	Y U	Port		2.5	2.5	Upwind	Yes
VT	Y U T U	Port		4.0	4.0	Upwind	No
W	Y L P	Port		2.25	2.25	Upwind	No
X	V L	Starboard	East	2.5	2.5	Upwind	Yes
XT	V X L T L	Port	90	4.0	4.0	Upwind	No
Z	V P L	Starboard		2.8	2.8	Upwind	Yes
ZJ	V J	Port		4.0	4.0	Upwind	No

For the designated “T” MARK as a rounding mark is left to Port or Starboard as indicated for the course. When used as a finish mark, finish between T and the nearby race committee boat from the direction of the last mark.

Note: When the course has been shortened (the RC displays flag S with two sounds), the finish shall be at a rounding mark, between that mark and a nearby race committee boat displaying flag S. Boats shall finish by crossing between the mark and flag from the course side (the direction of the last mark).

If the RC intends to shorten only specific classes, the class flags of those classes subject to the shortening shall be flown below flag S.

## ADDENDUM C

### TAKING A POST-RACE PENALTY

Class 3 has 11 starters.

The class finishes as follows:

Boat	Finish	Pre-Scoring Penalty Points	Scenario 1 Re-Scored Points	Scenario 2 Re-Scored Points
A	1 <sup>st</sup>	11	11	11
B	2 <sup>nd</sup>	10	10	10
C	3 <sup>rd</sup>	9	9	9
D	4 <sup>th</sup>	8	8	8
E	5 <sup>th</sup>	7	7	7
F	6 <sup>th</sup>	6	6	6
G	7 <sup>th</sup>	5	5	5
H	8 <sup>th</sup>	4	4	4
I	9 <sup>th</sup>	3	1 (3-2)	0 (3-3)
J	10 <sup>th</sup>	2	2	2
K	11 <sup>th</sup>	1	1	1

Boat I is protested. Boat I does not do penalty turns while racing

#### Scenario 1

- Prior to the end of the protest time limit, I decides to accept a scoring penalty and so notifies either race committee
- The scoring penalty is therefore 20% of 11 rounded down or 2 places
- I is scored 2 points worse or 1 point
- Per 44.3(c), no other finishes are changed

#### Scenario 2

- The protest time limit expires but prior to the start of the hearing, I decides to accept a scoring penalty and so notifies the race committee.
- The scoring penalty is therefore 30% of 11 rounded down or 3 places
- I is scored 3 points worse or 0 points

Per 44.3(c), a boat can never receive a score worse than DNF which under high point scoring, would be zero points (cannot get a negative score).