



I-420 Atlantic Coast Championship

Hosted by
The Indian Harbor Yacht
Club



October 25 -26, 2014

The organizing authority for this regatta is the Indian Harbor Yacht Club.

SAILING INSTRUCTIONS

1 RULES

- 1.1 This regatta will be governed by *The Racing Rules of Sailing* (RRS).
- 1.2 The Sailing Instruction take precedence over the Notice of Race. This changes Rule 63.7.
- 1.3 I-420 CR C.1.2.1 which modify RRS 42 under certain conditions.
In this regard the Race Committee will display Race Signals as provided in RRS P5.
- 1.4 Except for brief periods while changing or adjusting clothing or equipment, all competitors & coaches shall wear, while on or near the water, a US Coast Guard approved PFD.

2 NOTICES TO COMPETITORS - Notices to competitors will be posted on the official notice board located in the main Lobby Clubhouse.

3 CHANGES TO THE SAILING INSTRUCTIONS

- 3.1 Any onshore change to the sailing instructions will be posted on the official notice board before 0900 on the day that it will take effect, except that any change to the schedule of races will be posted by 1900 on the day before it will take effect.
- 3.2 On the water oral changes may be announced at the signal boat within 10 to 15 minutes before the start of any race. Flag L will be displayed during that time. This modifies RRS 90.2 (c).

4 SIGNALS MADE ASHORE

- 4.1 Signals made ashore will be displayed from the main flagpole on the south lawn of the Club House.
- 4.2 When pennant AP is displayed ashore “1 minute” is replaced with “not less than 45 minutes” in Race Signal AP.

5 SCHEDULE OF RACES

Friday	(10/24)	1530 – 1800	Open Practice
Saturday	(10/25)	0830	Registration Opens
		0930	Competitors’ meeting (registration closes)
		1030	First Start
			Buffet dinner in Main Club House to follow racing
Sunday	(10/26)	1100	First Start
		1500	No Start After
			Pizza and awards to follow racing

The race committee will run as many races as practical each day. The Race Committee will continue starts until it displays code flag “A” with no sound while boats are finishing. Ten (10) races are scheduled.

6 RACING AREAS – Racing area will be the Captains Harbor south of the Club or outside of the Captain’s Islands conditions permitting.

7 THE COURSES – The course will be designated by a number board. Sailing Instruction Appendix A illustrates the courses, including the approximate angle between legs, the order in which marks are to be passed, and the side on which each mark is to be left.

8 MARKS

- 8.1 Marks will be Yellow Tetrahedrons. Except that the finish Mark will be an Orange Tetrahedron.
- 8.2 New Marks as provided in instruction 10.1 will be Orange Tetrahedrons.

9 THE START

- 9.1 Races shall be started in accordance with Rule 26.
The starting line will be between the staff of the Orange flag on the committee boat and the course side of the port-end starting mark.
- 9.2 A boat starting later than five (5) minutes after her starting signal will be scored Did Not Start (DNS). This changes RRS A4.
- 9.3 If flag “I” and/or “Z,” or the black flag has been displayed, the race committee may attempt to hail the sail number(s) of boats on the course side of the starting line or its extension during the minute before her starting signal. Failure of the race committee to hail, failure of the amplification system, the order of the hail, or failure of a boat to hear a hail shall not be grounds for a request for redress. This instruction changes RRS 41 and 62.1.
- 9.4 The class flag will be numeral pennant one.

10 CHANGE OF THE NEXT LEG OF THE COURSE

- 10.1 To change the leg of the course, the race committee will lay a new mark or gate and remove the original mark (or Marks) as soon as practicable. When in a subsequent change a new mark is replaced, it will be replaced by an original mark.
- 10.2 If a leeward gate is changed, it will be replaced by a single mark to be left to port.

11 THE FINISH

The finishing line will be between the staff of the orange flag on the committee boat and the course side of the finishing mark.

12 TIME LIMITS

- 12.1 The time limit for the first boat in a race to sail the course and finish is 90 minutes.
- 12.2 Boats failing to finish within twenty (20) minutes after the first boat in a race sails the course and finishes will be scored Did Not Finish (DNF) without a hearing. This instruction changes RRS 35, A4, and A5.

13 PROTESTS AND REQUESTS FOR REDRESS

- 13.1 Protest forms are available in the Club House at the front desk. Protests, requests for redress or reopening shall be delivered there within the appropriate time limit.
- 13.2 The protest time limit is 45 minutes after the race committee signal boat docks. A long sound signal will indicate that the protest time has begun. The docking time and protest time limit will be posted on the Official Notice Board.
- 13.3 The protest notices required by RRS 63.2, and the notification of protests by the race committee required by RRS 61.1(b), will be posted on the official notice board as soon as possible after a protest has been delivered, but not later than 30 minutes after the protest time limit.
- 13.4 Hearings will be held in the Club House’s Red Room directly to the right of the main entrance.
- 13.5 Requests for redress relating to possible scoring errors shall be made no later than one hour after the score is posted. This changes the first sentence of RRS 62.2. Requests for redress relating to possible scoring errors will initially be reviewed by the race committee before being scheduled for hearing by the protest committee. This instruction changes RRS 63.1.
- 13.6 Requests for redress relating to an OCS or starting penalty should state the procedural error the competitor believes the race committee may have made. Further, the competitor will be expected to establish that he or she started properly. This changes RRS 62.1.

14 SCORING

- 14.1 The Low Point Scoring System of RRS Appendix A will apply.
- 14.2 One race will constitute a regatta.
- 14.3 When fewer than six (6) races have been completed a competitor’s series score will be the total of all of her race scores. When from six (6) to ten (10) races have been completed, a competitor’s series score will be the total of her race scores excluding her worst score.

15 SAFETY REGULATIONS

- 15.1 A competitor retiring from a race or leaving the race area between races shall notify a race committee boat or safety boat before leaving the course.
- 15.2 In addition to the requirements of rule 40, a condition of entry and participation in this regatta is that competitors AND coaches shall wear USCG approved Type III Personal Flotation Devices (PFDs) at all times while afloat except for brief periods while removing or adding clothing. Competitors from outside the US may wear PFD approved by their nations' certification authority to the extent permitted by international treaty. Inflatable type PFDs and "floatation aids" (e.g. Zhik, Baltic) are not permitted. Failure to comply will result in a penalty at the discretion of the protest committee up to and including disqualification from any or all races sailed on the day of the violation.
- 15.3 In the case of a coach not complying with 15.2, all sailors associated with his / her club may be disqualified from racing at the discretion of the protest committee.
- 15.4 An adult (parent, guardian or designated adult) is responsible for the safety of the each sailor. It is the responsibility of this adult to decide if the sailor should sail in the weather and sea conditions that might arise during the event. In addition, the race committee may require a competitor to retire from racing if the competitor is determined to be a risk to their own or others' safety.

- 16 EQUIPMENT AND MEASUREMENT - Boats are allowed only one hull, centerboard, rudder (including tiller and extension), mast, and boom during the regatta. Substitution of damaged equipment must be made in writing and approved by the race committee as soon as practical.

17 COACH AND SUPPORT BOAT REGULATIONS

17.1 General coach and support boat requirements

- a) Coach boats shall carry a working VHF radio and monitor the race committee channel 71.
- b) Coach and support boats shall not display distinctive markings or signaling apparatus, or any flags other than their ensign while any boats are racing.
- c) Coach and support boats shall follow the instructions of race committee, safety, protest committee, and race management boats.
- d) No coach or support boat shall tie up to or congregate around any aid to navigation, such as buoys or channel markers.

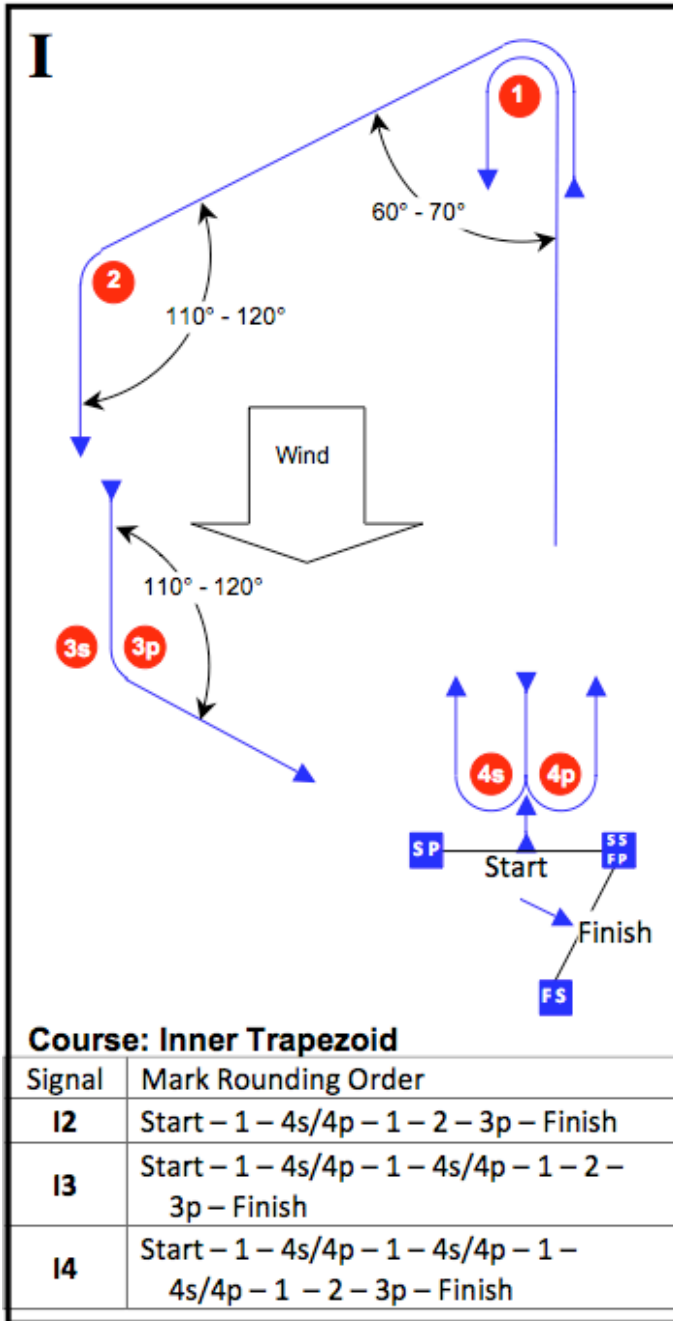
17.2 Restrictions

- a) All coach and support boats shall stay clear of the racing area at all times while boats are racing, except where permitted in this instruction.
- b) All coach and support boats shall further stay more than 100 yards away from any racing boat and move slowly and with minimal wake.
- c) Coach boats (not support boats) may not enter the corridor as boats are finishing.

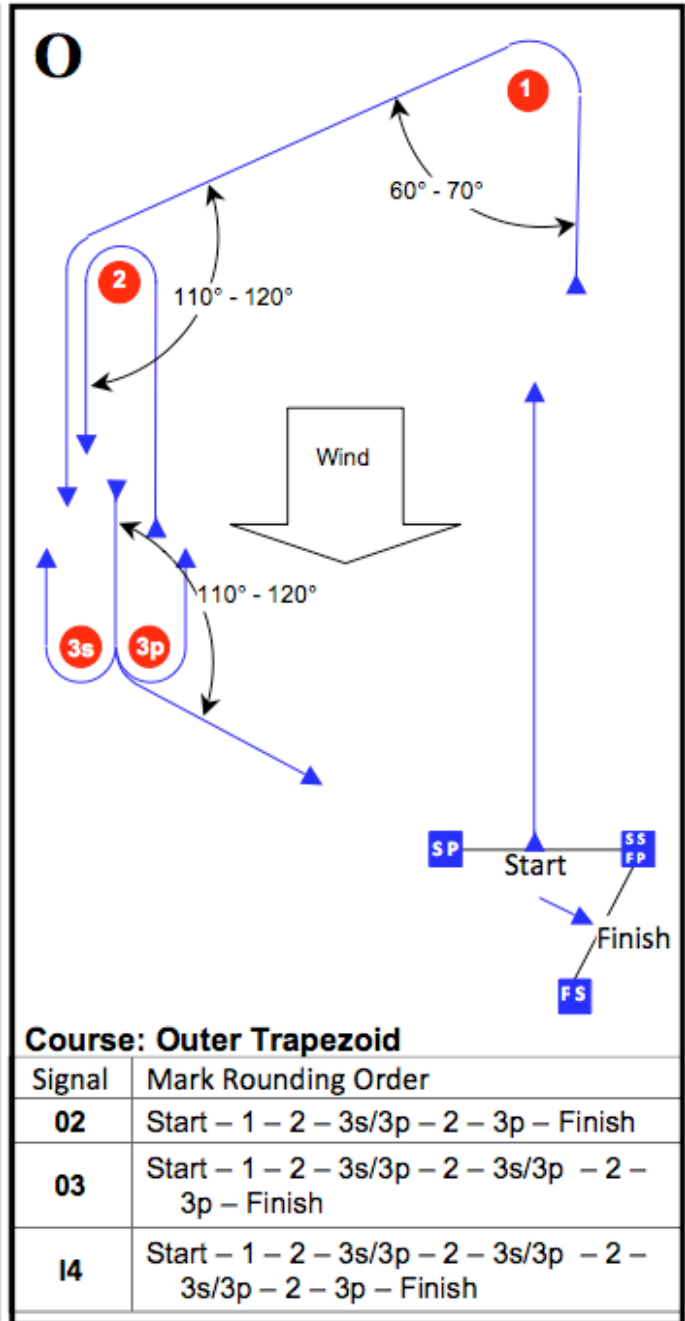
- 18 PRIZES - Prizes will be awarded according to the notice of race. Subsequent prizes may be awarded at the discretion of the organizing authority.

- 19 DISCLAIMER OF LIABILITY - Competitors participate in the regatta entirely at their own risk. See RRS 4, Decision to Race. The organizing authority will not accept any liability for material damage or personal injury or death sustained in conjunction with or prior to, during or after the regatta.

APPENDIX A

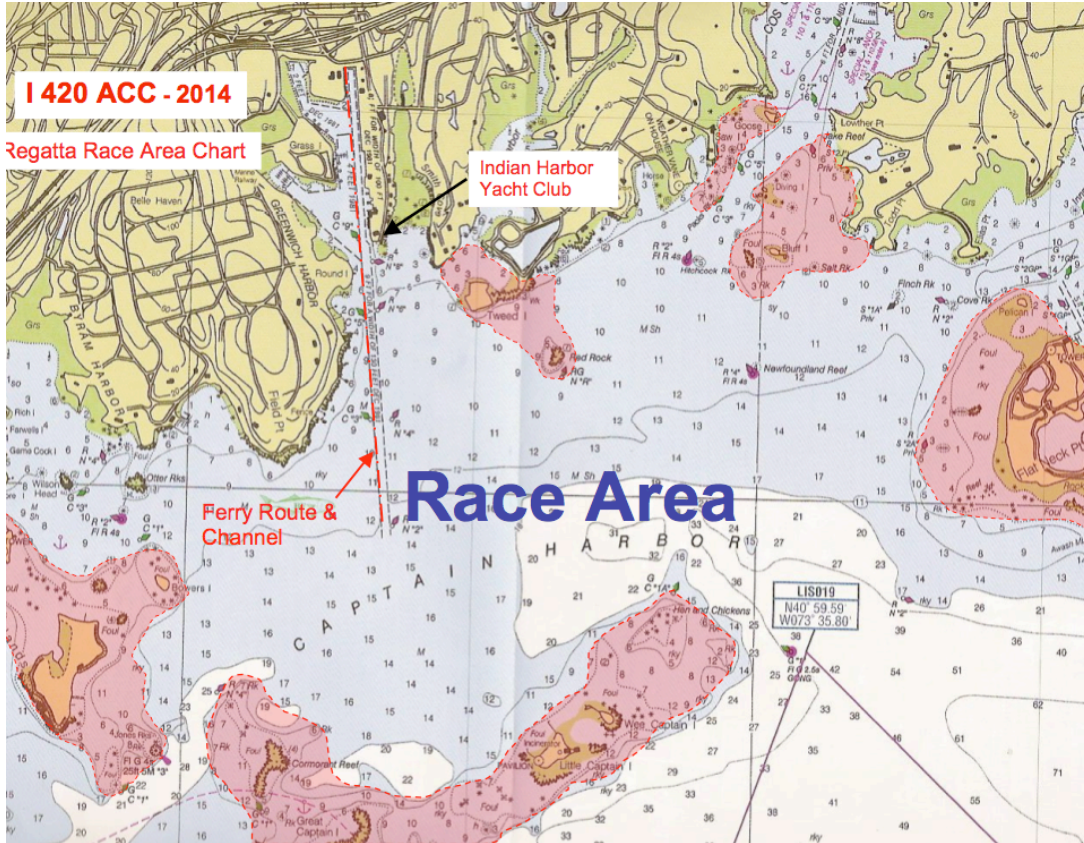


Course I



Course O

APPENDIX B



Alternate Race Area