



28th Annual Annapolis Leukemia Cup

ORGANIZING AUTHORITY
Eastport Yacht Club

Assist by
Annapolis Yacht Club

Saturday, 05 September 2020



GENERAL SAILING INSTRUCTIONS

with Amendment No. 1

ANNAPOLIS FLEETS

1 RULES

- 1.1 Racing will be governed by the *rules* as defined in the current *Racing Rules of Sailing* (RRS).
- 1.2 Neither spinnakers nor double headsails are permitted in the Leukemia Cruising Class. Entrants with racing experience are not permitted in the Leukemia Cruising Class; they shall participate in other classes.
- 1.3 PHRF N competitors only may use double headsails.
- 1.2 For the J/105 Fleet, Articles 9.1 through 9.1.7 of the J/105 Fleet 3 Articles shall be in effect. The J/105 Fleet 3 Articles can be found at www.j105fleet3.org/rules. This is a Level A event.
- 1.4 The notation “[DP]” in a rule in these Sailing Instructions means that the penalty for a breach of that rule may, at the discretion of the Protest Committee, be less than disqualification.
- 1.5 The notation “[NP]” in a rule in these Sailing Instructions means that a boat may not protest another boat for breaking that rule. This changes RRS 60.1(a).
- 1.6 [DP] Participants shall abide by all local, state, and federal health and safety guidelines in effect the day of the race.

2 NOTICES TO COMPETITORS

Notices to competitors will be posted on the Official Notice Board, located electronically at <http://eastportyc.org/leukemia-cup>.

3 CHANGES TO THE SAILING INSTRUCTIONS

Any change to the SIs will be posted before 0900 hours on the day of the race, except that any change to the schedule of races will be posted by 2000 hours the day before it will take effect.

4 SIGNALS MADE ASHORE

- 4.1 Signals made ashore will be displayed from the EYC flagpole.
- 4.2 When flag AP is displayed ashore, “1 minute” is replaced with “not less than 60 minutes.” This changes RRS Race Signals.

5 SCHEDULE OF RACES

- 5.1 For **Division A**, refer to Attachment A.
- 5.2 For **Division B**, refer to Attachment B.

6 RACING AREAS

The racing areas will be on the Severn River and the Chesapeake Bay, off Annapolis. Refer to Figure 1.





Leukemia Cup – Annapolis Fleets
SAILING INSTRUCTIONS with Amendment No. 1



7 FLEET ASSIGNMENTS

Fleet assignments, RC assignment, and course information is as follows. Refer to Figure 1.

| | Division A | Division B |
|-------------|-------------------|-------------------------|
| RC: | EYC | AYC |
| Rendezvous: | R2 (FI R, 2.5s) | Horn Point (FI W, 6.0s) |
| VHF: | 73 | 72 |

| CLASSES | | CLASSES |
|--------------------|----------------|--------------------|
| CRCA Non-Spinnaker | CRCA Spinnaker | Alerion Express 28 |
| Leukemia Cruising | PHRF A0/A1 | Cal 25 |
| J/30 | PHRF A2 | Harbor 20 |
| J/35 | PHRF B | Herreshoff 12.5 |
| J/80 | PHRF C | |
| J/105 | PHRF N | |
| Multihull | | |

8 CHECK IN

- 8.1 For **Division A**, refer to Attachment A.
- 8.2 For **Division B**, refer to Attachment B.

9 MARKS

- 9.1 For **Division A**, refer to Attachment A.
- 9.2 For **Division B**, refer to Attachment B.

10 THE START

- 10.1 For **Division A**, refer to Attachment A.
- 10.2 For **Division B**, refer to Attachment B.

11 RECALLS

- 11.1 For **Division A**, refer to Attachment A.
- 11.2 For **Division B**, refer to Attachment B.

12 THE FINISH

- 12.1 For **Division A**, refer to Attachment A.
- 12.2 For **Division B**, refer to Attachment B.

13 PENALTY SYSTEM

- 13.1 For **Division A**, refer to Attachment A.
- 13.2 For **Division B**, refer to Attachment B.

14 TIME LIMIT

- 14.1 For **Division A**, refer to Attachment A.
- 14.2 For **Division B**, refer to Attachment B.

15 SCORING INQUIRIES, PROTESTS, AND REQUESTS FOR REDRESS

- 15.1 Scoring Inquiries shall be filed within the Protest Time Limit via one of the following methods.
 - a. Electronic submittal is preferred and is available via the “Online Scoring Inquiry Filing” link found on the Yacht Scoring event main page.
 - b. Written forms may be submitted to a member of the race management team at Sparky’s Shed, located by the ground floor waterside entrance to the Club within the Protest Time Limit. Forms will be available at the same location.
 - c. Scoring inquiries may be resolved via teleconference or video conference.
- 15.2 Protests and Requests for Redress shall be filed within the Protest Time Limit via one of the following methods.
 - a. Electronic submittal is preferred and is available via the “Owner’s Corner” link found on the Yacht Scoring event main page. A diagram of the incident, if applicable, cannot be submitted via Yacht Scoring, and should be brought to the RC Office prior to the hearing.





Leukemia Cup – Annapolis Fleets SAILING INSTRUCTIONS with Amendment No. 1



- b. Written forms may be submitted to a member of the race management team at Sparky's Shed, located by the ground floor waterside entrance to the Club within the Protest Time Limit. Forms are available at the same location.
- 15.3 The alternative penalty acceptance form (RRS Appendix V2) will be available via the "Documents & Forms" link found on the Yacht Scoring event main page. A paper form will also be available from a member of the race management team at Sparky's Shed, located by the ground floor waterside entrance to the Club.
- 15.4 A boat's protest time limit is sixty (60) minutes after the RC Signal Vessel dock time from its division. This posting constitutes the notification required in RRS 61.1b and 63.2. The time limit for a Request for Redress based on an incident in the racing area shall be the Protest Time Limit. This changes RRS 62.2.
- 15.5 The Protest Committee may schedule a hearing prior to the Protest Time Limit if the parties and witnesses are available and have had time to prepare for the hearing. Protest and/or request for redress hearings may be virtual hearings. The parties to a virtual hearing are responsible for having their witnesses, if any, present at the beginning of the hearing. The time and location of each protest hearing will be posted on the Official Notice Board. Parties and witnesses are encouraged to download and review the Protest Procedure Guidelines & Code of Conduct for Remote Hearings, available via the "Documents & Forms" link found on the Yacht Scoring event main page.
- 15.6 When the RC or Protest Committee protests a boat, the requirements of RRS 61.1(b) to notify the boat may be met by posting a list of protested boats on the Official Notice Board before the end of the protest time limit.

16 SCORING

- 16.1 For **Division A**, refer to Attachment A.
16.2 For **Division B**, refer to Attachment B.

17 SAFETY

- 17.1 **[DP] [NP]** A boat that retires from a race shall notify the RC as soon as possible either by hail or on VHF channel 73, or via the EYC cell phone, (410) 271-7193, or via email at race.committee@eastportyc.org. A voicemail or email message shall include the approximate time of the message, the name and contact information of the caller, the boat name, and her sail number.
- 17.2 **[DP]** A boat shall not exercise right of way, cross in proximity to, or interfere with reasonable transit of the race area by commercial traffic of any kind. Boats must take evasive action well in advance of a potentially dangerous situation. The US Coast Guard, ship captains, and bay pilots have been encouraged to report any incident they observe.
- 17.3 **[DP]** A boat without way may use any means of propulsion to avoid underway commercial traffic, provided:
(a) the boat does not gain an advantage;
(b) using the propulsion is the boat's only means of avoiding the commercial traffic; and,
(c) the boat submits a report (in writing or by email) to the RC by the protest filing deadline that describes the incident and the boat's actions.
- 17.4 **[DP]** The RC or Protest Committee may protest a boat for SI 17.2 and 17.3 based on information received from any source. The protest time limit does not apply. This changes RRS 60.2, RRS 60.3, and RRS 61.3.

18 DISPOSAL OF TRASH

[DP] This is a Clean Race; all competitors are strongly encouraged to use multi-use water bottles instead of disposable water bottles, and to recycle whenever possible. A competitor shall not intentionally put trash in the water.



19 RADIO COMMUNICATION

- 19.1 For **Division A**, refer to Attachment A.
19.2 For **Division B**, refer to Attachment B.

20 PRIZES

- 20.1 Prizes in each class will be given as follows:
1st Place for three (3) or more entries;
1st and 2nd Places for five (5) or more entries; and,
1st, 2nd, and 3rd Places for seven (7) or more entries.





Leukemia Cup – Annapolis Fleets SAILING INSTRUCTIONS with Amendment No. 1



- 20.2 The Leukemia and Lymphoma Society will award additional prizes to the top fundraising boat in each class, as well as the overall top three (3) fundraisers for the event.
- 20.3 Participants who compete in all three (3) Annapolis-based charity regattas – Leukemia Cup, CRAB Cup, and Hospice Cup – will be eligible for the Weems & Plath Triple Crown Trophy, to be awarded at the end of the season. The final standings will be a combination of race and fundraising results across all events.

21 DISCLAIMER OF LIABILITY

Boats participate in Leukemia Cup entirely at their own risk; see RRS 4. The OA will accept no liability for material damage, personal injury, or death sustained in conjunction with or prior to, during, or after the event.

22 INSURANCE

[DP] [NP] Each participating boat shall be insured with valid third-party liability insurance with a minimum coverage of \$300,000 (US) per incident, or the equivalent.

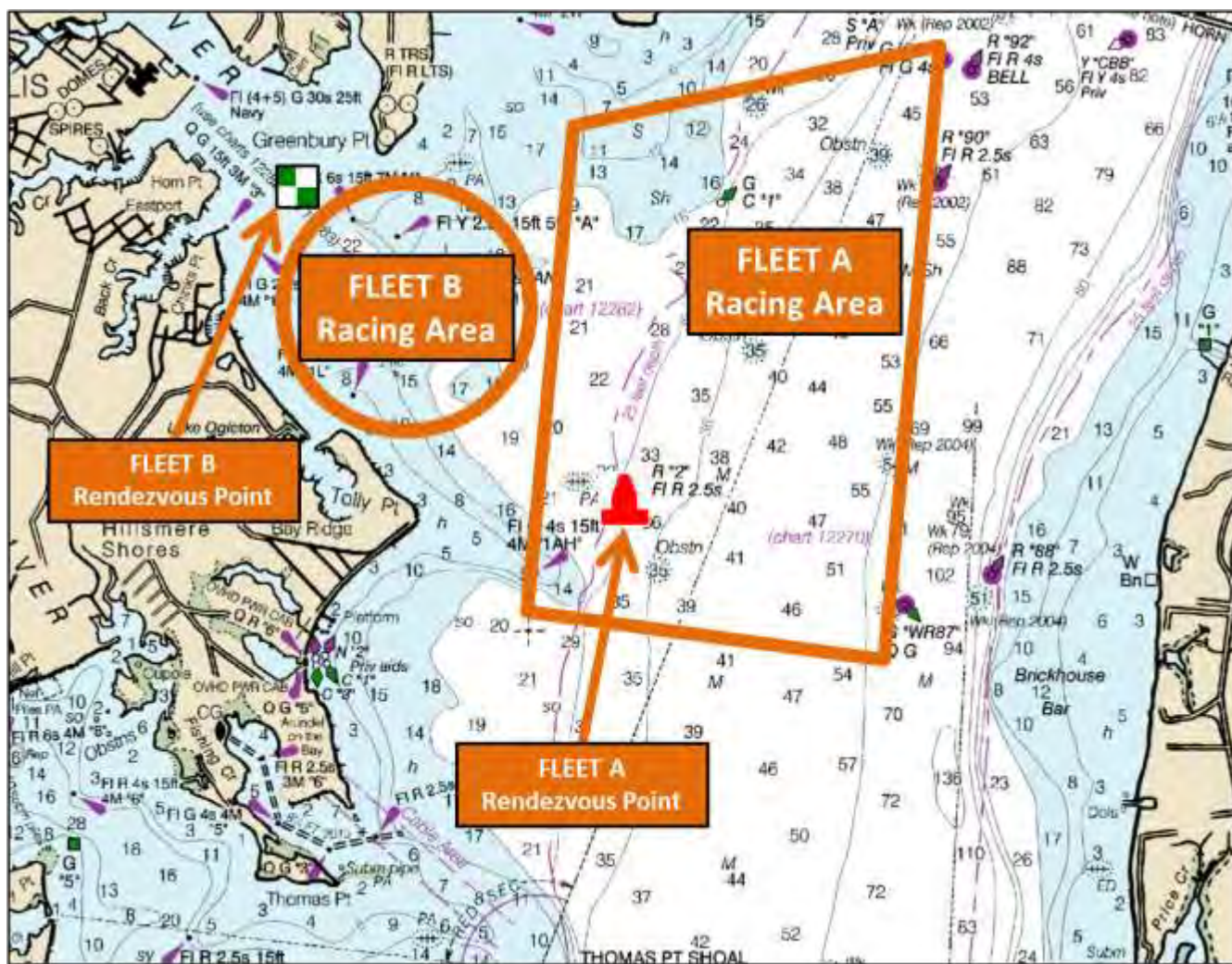


FIGURE 1. Divisions A & B Rendezvous Points & Racing Areas





ATTACHMENT A

for the PURSUIT & MULTIHULL Classes

A1 SCHEDULE OF RACES

- A1.1 One (1) race is scheduled.
- A1.2 The Warning Signal for the race is intended to be made at 1100 hours.
- A1.3 No Warning Signal shall be made after 1400 hours.

A2 CHECK IN

[DP] [NP] Boats in Division A should not attempt to check in with the RC Signal Vessel.

A3 THE COURSE

- A3.1 All classes will sail the same course.
- A3.2 The course shall be posted on the Official Notice Board no later than 1730 hours on Friday, 04 September 2020.

A4 MARKS

A4.1 Marks that may be used are identified immediately below. Refer to Figure 2.

| CHART DESIGNATION | | LIGHT | APPROXIMATE LOCATION |
|-------------------|----------------------------|------------|------------------------------|
| 1 | Y "AN" | Fl Y, 4.0s | N 38° 57.81' / W 076° 26.81' |
| 2 | GC1 | none | N 38° 58.19' / W 076° 24.86' |
| 3 | G91 | Fl G, 4.0s | N 38° 58.99' / W 076° 23.28' |
| 4 | WR87 | Q G | N 38° 55.97' / W 076° 23.55' |
| 5 | R2 | Fl R, 2.5s | N 38° 56.50' / W 076° 25.56' |
| 6 | Orange Inflatable Cylinder | none | N 38° 56.26' / W 076° 25.36' |

A4.2 Marks shall be rounded in the order defined in the course that is posted in accordance with SI A3.2, reading from left to right. Marks designated in "RED" shall be rounded to port; marks designated in "GREEN" shall be rounded to starboard.

A5 THE START

A5.1 The starting line shall be between a staff displaying an orange flag on the RC Signal Vessel at the starboard end and R2 (Fl R, 2.5s) at the port end.

A5.2 PURSUIT Classes

- A5.2.1 This shall be a pursuit race with a reverse PHRF Time over Distance (ToD) starting order. The boat with the slowest (highest) rating shall start first and the fastest (lowest) rating shall start last.
- A5.2.2 The RC shall signal the starting sequence as follows (this changes RRS 26):

| TIME | SIGNAL | FLAG / SOUND |
|----------------------------|--|--|
| 1100 | Warning signal for all boats | Raise large EYC burgee with 1 sound |
| 1101 | Preparatory signal for the first boat to start | Raise code flag "P" with 1 sound |
| 1104 | | Lower code flag "P" with a long sound |
| 1105 | Starting signal for the first boat to start | Lower large EYC burgee and briefly raise number pennant "0" with 1 sound |
| each subsequent start time | Starting signal for remaining boats | Briefly raise number pennant "0" with 1 sound |

A5.2.3 A boat's individual preparatory signal is four (4) minutes prior to her individual scheduled start. After the first boat has started, there will be no visual signal or sound for any subsequent preparatory signal. This changes RRS 26.





Leukemia Cup – Annapolis Fleets SAILING INSTRUCTIONS with Amendment No. 1



- A5.2.4 The start times for all boats shall be based on their PHRF ToD Circular Random handicap. The race shall use GPS time synchronization. The RC will attempt to broadcast a five (5) second countdown for each starting time on VHF channel 73. Failure of the RC to announce a start time will not be grounds for redress. This changes RRS 41 and 62.1(a).
- A5.2.5 The start time for each boat shall be available at EYC no later than 1730 hours on Friday, 04 September 2020, and will be posted on the Official Notice Board.
- A5.2.6 After the Warning signal for the first start, boats shall stay clear of the starting area until four (4) minutes before their scheduled starting time.
- A5.2.7 In the event a postponement is signaled, the RC shall announce the revised start times on VHF channel 73 before lowering the postponement flag. The RC intends to manage postponement delays in increments of ten (10) minutes. For example, following a postponement, competitors may be directed by the RC to add ten (10) minutes, or twenty (20) minutes, or some other ten-minute increment to their original start time.
- A5.3 **MULTIHULL Classes**
- A5.3.1 The RC will attempt to signal the **MULTIHULL** class start sequence as soon as possible after completing the start of all boats in the **PURSUIT** classes pursuit race. The RC shall signal a wakeup call with multiple sounds, approximately one (1) minute prior to the Warning signal.
- A5.3.2 The **MULTIHULL** class start shall be in accordance with RRS 26.

A6 RECALLS

A6.1 **PURSUIT Classes**

- A6.1.1 If any part of a boat's hull, crew or equipment is on the course side of the starting line at her starting signal and she is identified, she shall be considered On Course Side (OCS). She shall not attempt to clear herself, start, or restart, and shall, instead, sail to the first mark. The RC will attempt to broadcast her sail number on VHF channel 73. Flag X will not be used. This changes RRS 29.1.
- A6.1.2 **[DP] [NP]** A boat that is scored OCS shall, without a hearing, be penalized by having ten (10) minutes plus the amount of time that she was over early added to her elapsed time. In RRS 28, the word "start" is replaced with "start or take a penalty in accordance with SI A6.1.2". This changes RRS 28, 63.1, A4, and A5.
- A6.2 For the **MULTIHULL** classes, the RC intends to hail the sail numbers of OCS boats after the starting signal on VHF channel 73. A boat may not base a request for redress on the failure to hear or receive the announcement, the timeliness of the announcement, or the order in which boats are announced. This changes RRS 41 and 62.1(a).

A7 THE FINISH

- A7.1 The finishing line shall be between a staff displaying an orange flag on the RC vessel and R2.
- A7.2 The RC may shorten the course at any rounding mark in accordance with RRS 32.

A8 PENALTY SYSTEM

- A8.1 RRS Appendix V1, Penalty at the Time of An Incident, will apply.
- A8.2 RRS Appendix V2, Penalty Taken After A Race, will apply.

A9 TIME LIMIT

The RC shall abandon the race for a class if no boat in that class sails the course and finishes by 1600 hours. Boats not finished by 1600 shall be scored Time Limit Expired (TLE). This changes RRS 35.

A10 SCORING

- A10.1 RRS Appendix A4, Low Point System, will apply.
- A10.2 For the **PURSUIT** classes, handicap ratings will be in accordance with the PHRF Circular Random Time over Distance rating, and boats will be scored in the order of finish.
- A10.3 For the **MULTIHULL** classes, boats will be scored per the Chesapeake Multihull Association system.
- A10.4 Boats to be scored TLE and not thereafter retiring, being penalized or given redress will be scored points equal to the number of boats finishing within the time limit plus two (2) points by the RC without a hearing. This changes RRS A4.2 and A5.





Leukemia Cup – Annapolis Fleets SAILING INSTRUCTIONS with Amendment No. 1



A11 RADIO COMMUNICATIONS

- A11.1 **[DP] [NP]** Boats shall have a working VHF radio capable of communicating on VHF channels 9, 13, 16, 72, and 73.
- A11.2 Division A RC shall communicate with competitors on VHF channel 73. A boat may not base a request for redress on the failure to hear or receive radio communications, the timeliness of communication, or the contents of any transmission. This changes RRS 41 and 62.1(a).
- A11.3 Boats are encouraged to make contact with commercial traffic on VHF channel 13, as required for safety.

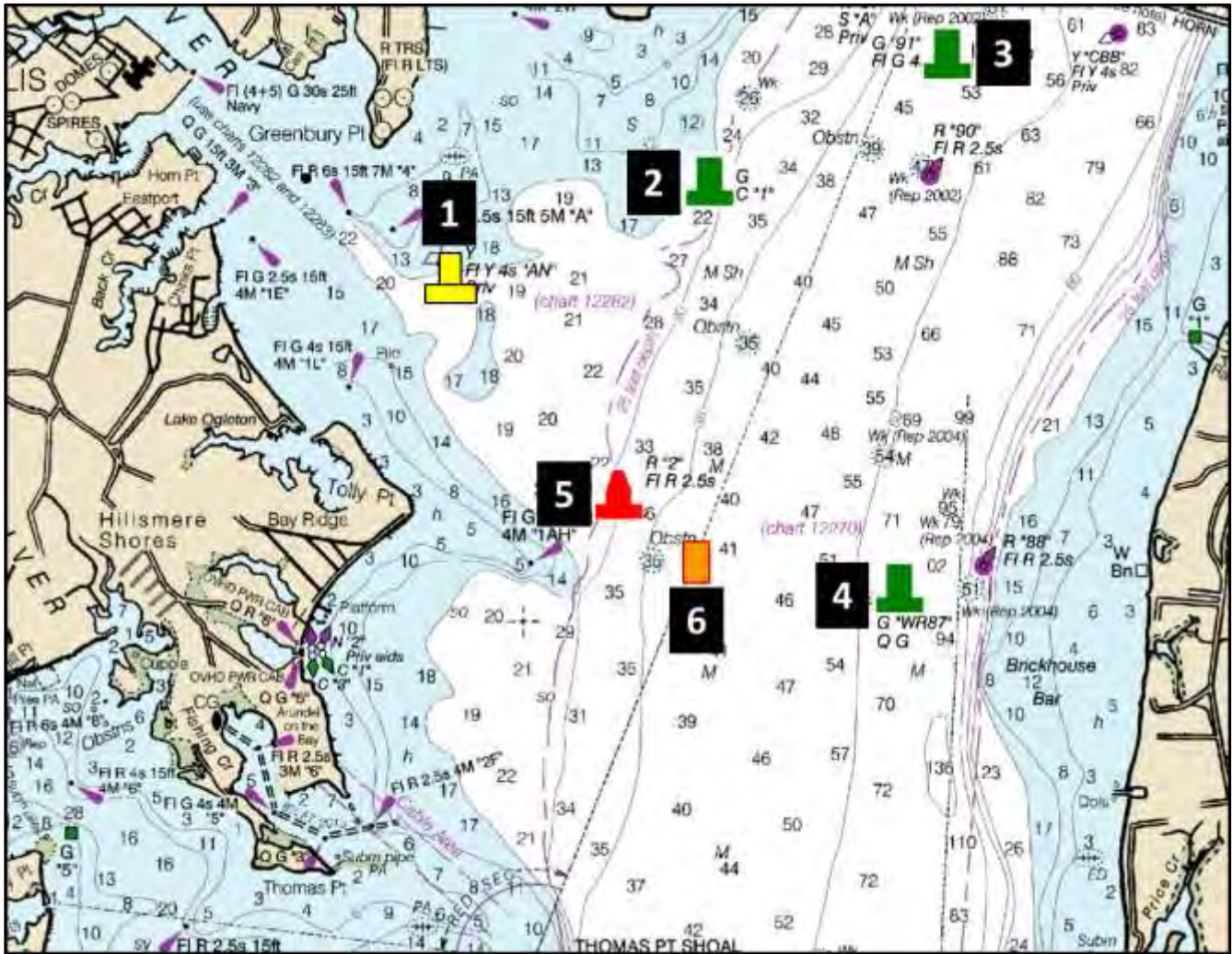


FIGURE 2. Marks for the PURSUIT & MULTIHULL Classes





ATTACHMENT B

for the ALERION EXPRESS 28, CAL 25, HARBOR 20, & HERRESHOF 12.5 Classes

B1 SCHEDULE OF RACES

- B1.1 Three (3) races are scheduled for the **ALERION EXPRESS 28**, **CAL 25**, **HARBOR 20**, and **HERRESHOFF 12.5** classes.
- B1.2 Boats shall rendezvous at 1030 hours in the vicinity of the green and white Horn Point mark (HP, FI W, 6.0s). The RC will display code flag “L” and proceed to the starting area.
- B1.3 The Warning Signal for the first race is intended to be made at 1100 hours.
- B1.4 No Warning Signal shall be made after 1530 hours.

B2 CHECK IN

[DP] [NP] Prior to starting, each boat shall check in by sailing past the stern of the RC Signal Vessel on starboard tack, hail the sail number, and be acknowledged by the RC.

B3 THE COURSES

- B3.1 The courses will be windward-leeward, as shown in Figure 3 (not to scale). Marks shall be rounded and the finishing line crossed in the order presented.
- B3.2 No later than the Warning Signal, the course to be sailed will be designated on a board displayed on the stern or side of the RC Signal Vessel that is opposite the starting line.
- B3.3 When the first mark of the course is to be a change mark, code flag “C” will be displayed by the Signal Vessel before the warning signal, accompanied by a series of repetitive sound signals.
- B3.4 If only one gate mark is set, boats shall round the single mark to port.

B4 MARKS

The marks shall be as described below.

| ALERION EXPRESS 28, CAL 25, HARBOR 20, & HERRESHOFF 12.5 MARKS | |
|--|-------------------------------|
| | Race Committee: AYC |
| Start Mark | Small Yellow Cylinder |
| Weather Mark | Small Orange Cylinder |
| Weather Mark Offset | Small Green Cylinder |
| Leeward Mark(s) | Small Orange Cylinder(s) |
| Weather Change Mark | Orange Cylinder w/ Black Band |
| Finish Mark | Small Yellow Cylinder |

B5 THE START

- B5.1 Races will be started in accordance with RRS Appendix U, Audible Signal Racing System.
- B5.2 The class flags and intended start order for the first race shall be as defined immediately below. Subsequent starts may be in a different order so as to maximize racing for all classes.

| Race Committee: AYC | |
|---------------------|----------------|
| CLASS | FLAG / PENNANT |
| Alerion Express 28 | “4” |
| Cal 25 | “T” |
| Harbor 20 | “W” |
| Herreshoff 12.5 | “8” |

- B5.3 The starting line will be between a staff displaying an orange flag on the RC Signal Vessel at the starboard end, and the course side of the starting/finishing mark at the port end.





Leukemia Cup – Annapolis Fleets
SAILING INSTRUCTIONS with Amendment No. 1



- B5.4 **[DP]** Boats whose warning signal has not been made shall avoid the starting area during the starting sequence for other races.
- B5.5 A boat that does not start within ten (10) minutes after her starting signal will be scored Did Not Start without a hearing. This changes RRS A4 and A5.

B6 RECALLS

The RC intends to hail the sail numbers of OCS boats after the starting signal on VHF channel 72. A boat may not base a request for redress on the failure to hear or receive the announcement, the timeliness of the announcement, or the order in which boats are announced. This changes RRS 41 and 62.1(a).

B7 THE FINISH

The starting/finishing line shall be between the staff or halyard on the RC Signal Vessel displaying an orange flag and the course side of the finishing mark.

B8 PENALTY SYSTEM

- B8.1 RRS Appendix V1, Penalty at the Time of An Incident, will apply.
- B8.2 RRS Appendix V2, Penalty Taken After A Race, will apply.

B9 TIME LIMIT

- B9.1 The race shall be abandoned if no boat has rounded the first mark within thirty (30) minutes of the start.
- B9.2 RRS 35 (Time Limit) is replaced by: "If no boats in her class have finished within one and one half (1.5) hours, the race shall be abandoned. Boats still racing twenty (20) minutes after the first boat in her class finishes, and not subsequently retiring, being penalized or given redress, will be scored TLE (Time Limit Expired, see Scoring) and should proceed to the starting area if another race is scheduled.

B10 SCORING

- B10.1 RRS Appendix A4, Low Point System, will apply.
- B10.2 One (1) scored race is required to constitute a series.
- B10.3 A boat's series score will be the total of her race scores.
- B10.4 Boats to be scored TLE and not thereafter retiring, being penalized or given redress will be scored points equal to the number of boats finishing within the time limit plus two (2) points by the RC without a hearing. This changes RRS A4.2 and A5.

B11 RADIO COMMUNICATIONS

- B11.1 **[DP] [NP]** Boats shall have a working VHF radio capable of communicating on VHF channels 9, 13, 16, 72, and 73.
- B11.2 Division B RC shall communicate with competitors on VHF channel 72.
- B11.3 Boats are encouraged to make contact with commercial traffic on VHF channel 13, as required for safety.



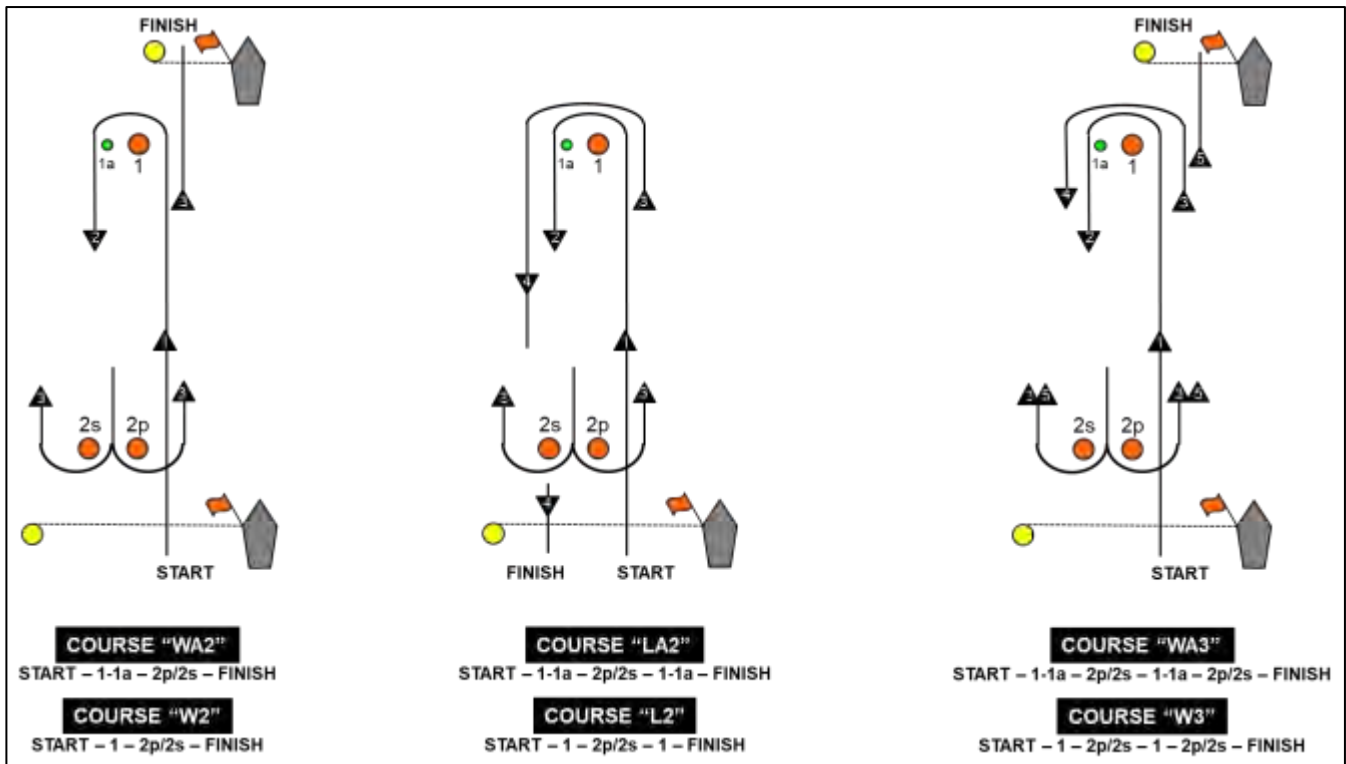


FIGURE 3. ALERION EXPRESS 28, CAL 25, HARBOR 20, & HERRESHOFF 12.5 Course Diagrams & Descriptions