

One-Design Classic

CBYRA Sanction #324

Saturday, 27 June 2020

ORGANIZING AUTHORITY
Eastport Yacht Club



SAILING INSTRUCTIONS Amendment No. 1

This amendment clarifies the status of the start line and the finish line while racing.

After a boat starts, the start line will be “closed” and cannot be crossed when the orange line flag is displayed. Also, the finish line cannot be crossed when the blue line flag is displayed – except when on the final leg of the course. SIs 9.4 and 9.5 are added.

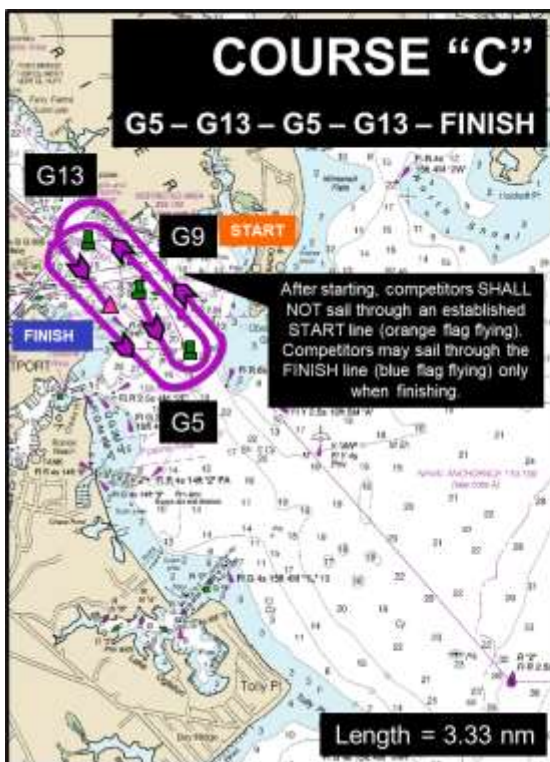
- 9.4 **[DP]** Once properly started, boats shall not sail through the starting line, in either direction, when the RC is displaying an orange flag. For boats that have already started, the starting line shall be considered an obstruction. This changes RRS 28.1.
- 9.5 **[DP]** Except on the leg to the finish, boats shall not sail through the finish line, in either direction, when the RC is displaying a blue flag. This changes RRS 28.1.

A note in each of the course diagrams in Attachment A is revised to note the status of the start and finish lines. Attachment A is replaced with the following.





One-Design Classic
SAILING INSTRUCTIONS Amendment No. 1



Posted: 1500 hours, 24 June 2020



eastportyc_race

@eastportyc_race

