



Discover the Caribbean Series 2014

XXV Edition

Organizing Authority

Ponce Yacht & Fishing Club

Ponce, Puerto Rico

October 31, November 1-2, 2014

Sailing Instructions

1. RULES

- 1.1 This Regatta will be governed by the rules as defined in The Racing Rules of Sailing (RRS). To the extent permitted by Part 7 of the RRS, specific provisions of the RRS may be modified, altered or made inoperative by the Notice of Race (NOR) or the Sailing Instructions (SI).
- 1.2 Rules of participating ONE DESIGN classes will apply, except as modified, altered or made inoperative by the NOR or the SI, to the extent permitted by such class rules.
- 1.3 Boats in CRUISING CLASS may sail with two headsails and no spinnaker. The spinnaker pole in CRUISING CLASS is allowed. Boats in Jib and Main CLASS have to sail with one headsail only. The use of spinnaker pole is allowed.
- 1.4 Genoas more than 150% will not be allowed for all Cruising and Jib & Main.
- 1.5 The regatta will use two handicap systems. The CSA handicap system will be used for the CSA Racing Class and any other class that wish to race under this system. Only boats with an official 2014 CSA Certificate will be allowed to race in CSA Classes. Boats racing on PHRF Classes will use the SE Florida 2014 handicap system. Only boats with an official 2014 US PHRF of SE Florida Certificate will be allowed to race in PHRF Classes. Certificates may be obtained at www.phrfsef.com
- 1.6 If there is a conflict between languages the English text will take precedence.

2. NOTICE TO COMPETITORS

- 2.1 Notice to competitors will be posted on the Official Notice Board located beside the Regatta Office in the Marlin Room.

3. CHANGES IN SAILING INSTRUCTION

- 3.1 Any changes to the Sailing Instructions will be posted before 0800 hours of the day it will take effect, except that any changes to the schedule will be posted by 2000 hours on the day before it will take effect.

4. SIGNALS MADE ASHORE

- 4.1 Signals made ashore will be displayed on two (2) flag poles situated at the Marina "B" entrance.

- 4.2 If the AP flag is displayed ashore, when it is dropped, no race will begin for at least 30 minutes.

5. SCHEDULE OF RACES

- 5.1 Friday October 31, Saturday November 1 and Sunday November 2, 2014.
- 5.2 The warning signal for the first race every racing day is scheduled for 1100 hours.
- 5.3 No warning signal will be hoisted after 1600 hours on Friday and Saturday; no warning signal will be hoisted after 1400 on Sunday.
- 5.4 Multiple races will be run each day as time and weather conditions permit it. The Race Committee will endeavor to schedule back-to-back races each day.
- 5.5 Multiple classes may be started at the same time.

6. CLASS FLAG

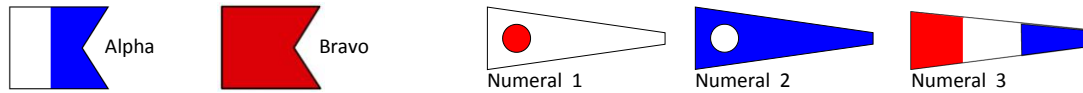
- 6.1 The following class flag are designated for the following classes:

| Race Committee Signals Vessel (RCSV) Alpha | | |
|--|--------------------|------------|
| Num. | Class | Class Flag |
| 1 | Cruising PHRF | Green |
| 2 | Jib and Main PHRF | White |
| 3 | Chalanas 28 | Brown |
| 4 | Chalanas 20 and 24 | Brown |
| 5 | O'Day 19 | Class Flag |
| 6 | Hunter 21.6 | Class Flag |
| Race Committee Signals Vessel (RCSV) Bravo | | |
| 1 | Melges 32 | Class Flag |
| 2 | IC 24 | Class Flag |
| 3 | J 24 | Class Flag |
| 4 | Racing CSA | Green |

- 6.2 Class flags will be distributed at the skipper meeting for each participating boat, except for One Design Classes.
- 6.3 The decision as to which class a boat races in rests entirely to the Regatta Race Committee, whose decision will be final.
- 6.4 In order to constitute a class, a minimum of three (3) boats will be required.
- 6.5 Each boat shall carry the flag of its class assignment on the backstay or at the stern rail except One Design Boats.

7. RACING AREA

- 7.1 There will be three racing areas designated as “Area 1”(Dinghy), “Area 2”(Bravo) and “Area 3”(Alpha) located approximately as shown in Appendix A.
- 7.2 The racing area for the first race of each day will be designated by the Race Committee each day by 0900 AST and announced by displaying from the official flagpoles numeral Pennants 1, 2 or 3 for the designation of course area 1 course area 2 and course area 3 respectively, under flag Alfa for the RCSV Alfa and under flag Bravo for the RCSV Bravo. The RCSV will also display the designated numeral Pennant over the RC flag.



- 7.3 Changes to the racing area on the water during the day will be announced by displaying the appropriate numeral Pennant on the Race Committee signal vessel, over the RC flag.

8. THE COURSES

- 8.1 The courses diagram in Appendix B and C will be sailed at the discretion of the RC. Appendix B and C shows the approximate configuration of the courses including the order in which the marks are to be rounded, and the side on which each mark is to be left. Although the RC will attempt to set courses that comply with these illustrations, failure to duplicate them precisely shall not be grounds for protest or redress.
- 8.2 Courses in Appendix B are exclusively for RCSV Alfa. Courses in Appendix C are exclusively for RCSV Bravo.
- 8.3 The course number designation for the course to be sailed by each class will be posted no later than four (4) minutes before each start for that class by the Race Committee Signals Vessel displaying the designated numeral pennant.
- 8.4 The courses in Appendix C (Bravo) showing Mark “G” are leeward marks in the form of a gate (mark M3S and M3P). Boats shall pass between M3S and M3P. In case there is only one mark (M3) it shall be left to Port

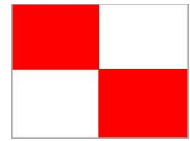
9. MARKS

- 9.1 All the marks for the race series are as described in APPENDIX B.
- 9.1.1 For Racing Area 2 (Bravo RCSV), M4 is a Temporary Mark South of Roca Ahogada.
- 9.2 The starting and finishing marks will be the RCSV with a staff displaying an orange flag and a yellow or orange mark.
- 9.3 Marks are to be left to PORT unless specified with (Stb), for Starboard, which would be for Navigational Buoy R”N”6 at the entrance of Ponce Harbor.

10. THE STARTS

- 10.1 The starting line will be between a staff displaying an orange flag on the starboard end of the starting line and the port end starting mark.
- 10.2 Boats whose warning signal has not been made shall avoid the starting area.

- 10.3 To alert boats that a race or sequence of races will start soon, the orange flag on the staff designating the starting line will be displayed (with one sound signal) for at least one minute before a warning signal is displayed.
- 10.4 The orange flag on the staff designating the starting line will be removed, with no sound signal, when the race committee determines that it will not promptly make the warning signal for the next race in a sequence of races.
- 10.5 A boat starting later than four minutes after her starting signal will be scored Did Not Start without a hearing. This changes rules A4 and A5.
- 10.6 If flag U has been displayed as the preparatory signal, no part of a boat's hull, crew, or equipment shall be in the triangle formed by the ends of the starting line and the first mark during the last minute before her starting signal. If a boat breaks this rule and is identified, she shall be disqualified without a hearing but not if the race is restarted or re-sailed or postponed or abandoned before the starting signal. This changes rule 26.



11. THE FINISH

- 11.1 For all courses that finish on the RCSV, the finish line will be between a staff displaying an orange flag or shape on the finishing mark at the starboard end and the port finishing mark.
- 11.2 For all the courses that finish inside the P.Y.F.C. Marina Area, the finish line will be the western end of the Tuna dock and the P.Y.F.C. Pelicanos's Room Area.
- 11.3 Boats that have already finished shall avoid the finishing area.

12. CHANGE OF COURSES AFTER THE START

- 12.1 A change of course after the start will be signaled before the leading boat in that class has begun the leg, although the new mark may not be in position. Any mark to be rounded after rounding the new mark may be relocated to maintain the original course configuration, except for all courses that are configured with permanent buoys.

13. TIME LIMIT

- 13.1 The time limit for any particular race will be two (2) hours for Jib and Main, Cruising, Hunter 21.6, O'Day 19 and Chalanas. Boats failing to finish within thirty (30) minutes after the first or within the time limit, whichever is first, will be scored Did Not Finish. This changes RRS 35 and RRS A4 and A5.
- 13.2 For all ONE DESIGN Classes, Racing.
- 13.2.1 Boats failing to finish within the Time Limit after the first boat of their class sails the course and finishes will be scored Did Not Finish without a hearing. This changes rule 35, A4 and A5.

- 13.2.2 Time limits in minutes for the regatta are as follows:

| Class | Time Limits |
|--------------|-------------|
| IC 24 / J 24 | 10 |
| Racing A | 20 |

Melges 32

15

14. PROTEST AND REQUEST FOR REDRESS

- 14.1 Protest shall be written on forms available at Regatta Office at the Marlin Room.
- 14.2 In addition to the requirements of RRS 61, protesting yacht shall inform the RCSV or RC Finish at the P.Y.F.C. of their intention to file protest, as soon as reasonably possible after finishing the race. This changes rule 61 RRS.
- 14.3 The Protest Time Limit for Alpha Course is sixty (60) minutes after the RCSV has docked.
- 14.4 The Protest Time Limit for Bravo Course is sixty (60) minutes after the last boat of her class has finished the last race of the day.
- 14.5 A notice will be posted on the Official Notice Board as soon as possible indicating the time when Protest Time started and the time when it will end for each course and class.
- 14.6 Protest notices will be posted on the Official Notice Board as soon as possible to inform competitors of hearings in which they are parties or named as witnesses. The inclusion of a sail number of a boat on the Official Notice Board shall be considered as notice that a representative should attend a hearing as indicated.
- 14.7 Protest will be heard in approximately the order they were received, beginning as soon as practical.
- 14.8 On the last day of racing a request for reopening a hearing shall be delivered
- 14.8.1 within the protest time limit if the requesting party was informed of the decision on the previous day;
- 14.8.2 no later than 30 minutes after the requesting party was informed of the decision on that day. This changes rule 66.
- 14.9 On the last scheduled day of racing a request for redress based on a protest committee decision shall be delivered no later than 30 minutes after the decision was posted. This changes rule 62.2.
- 14.10 Protest Fee \$ 30.00. Reopening \$ 40.00

15. SCORING

- 15.1 A minimum of three (3) races will constitute a regatta.
- 15.1.1 In the event that between one (1) race and five (5) races have been completed, a boats score will be the total of her race scores excluding her (1) worst score.
- 15.1.2 In the event that between five (5) races and ten (10) races have been completed, a boats score will be the total of her race scores excluding her two (2) worst scores.
- 15.1.3 In the event that between ten (10) races and fifteen (15) races have been completed, a boats score will be the total of her race scores excluding her three worst scores.

16. RADIO COMUNICATION

- 16.1 All boats shall carry a VHF radio. The official radio communication is channel 6 for Alpha course and channel 11 for Bravo course.
- 16.2 The Race Committee Signal Boat will endeavor to call by radio boats that are OCS. Failure to hail OCS or sequence in which they are called are NOT grounds for redress. This changes rule 62.1 RRS.

17. SAFETY

- 17.1 Safety requirements shall be observed in compliance with the USCG regulation and as written in these sailing Instructions.
- 17.2 In addition to the USCG Regulations all boats shall comply with Appendix D.

18. PRIZES

- 18.1 Class trophies will be awarded to the first three boats in each class for Discover The Caribbean.
- 18.2 The award ceremony will be held on Sunday, November 2, 2014 at Ponce Yacht and Fishing Club, Marlin Room beginning at 1630 hours.

19. DISCLAIMER OF LIABILITY

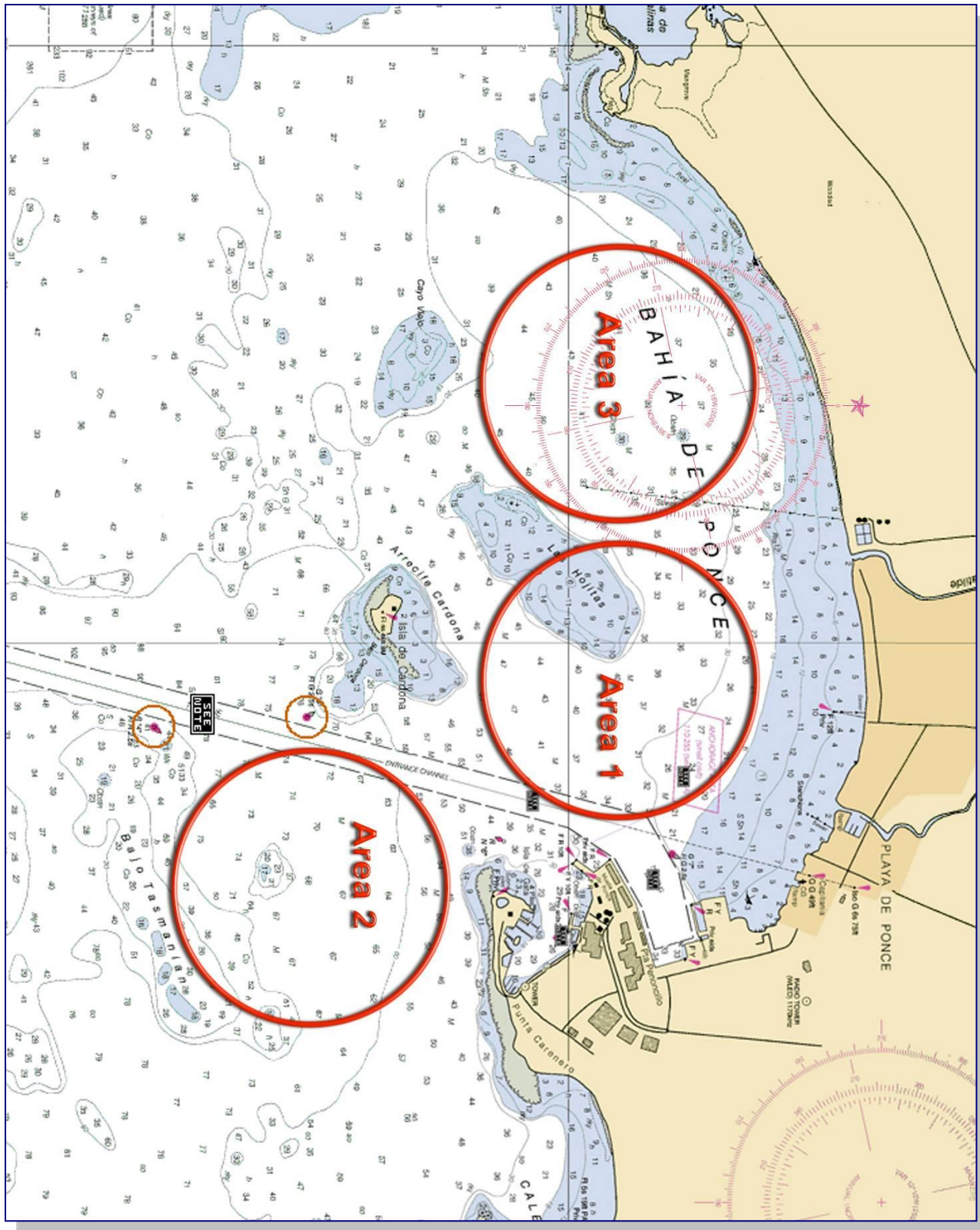
Competitors participating in the regatta are entirely at their own risk. Competitors agree to be bound by the rules as defined in The Racing Rules of Sailing (RRS), by Sailing Instruction (SI), the Notice of Race (NOR) and any additional information to the SI or to the NOR. Competitors agree to take any responsibility for nautical qualities of their yacht, the rigging, the crew ability and safety requirements. Competitors also agree to take any and all responsibility for damages caused to third persons (bodily injury included but not limited thereto) or their belongings, to themselves (bodily injury included but not limited thereto) or to their belongings, ashore and at sea as a consequence of their participation in the regatta, relieving of any responsibility The Ponce Yacht and Fishing Club and all his members, the sponsors and all persons involved in the organization under whatever qualification and to accept full responsibility for their behavior and dress of yacht's crew, representative and guest. Competitors are to be acquainted with RRS Part 1 Fundamental Rule 4: "The responsibility for a boat's decision to participate in a race or to continue racing is hers alone". In any case, competitors agree that The Ponce Yacht and Fishing Club Organization, the sponsors and their agents, have no responsibility for loss of life or injury to members or others or for the loss of, or damage to any vessel or property. As part of the registration process, each individual participating crewmember will be required to sign a declaration accepting this disclaimer of liability.

20. RIGHT TO USE AND LIKENESS

- 20.1 By participating in the Discover the Caribbean Regatta a competitor automatically grants the Discover the Caribbean Regatta Organizing Committee and its sponsors the right in perpetuity to make, use and show, from time to time at their discretion, any motion pictures and live,

taped or filmed television and other reproductions of the competitor during the period of the Discover the Caribbean Regatta, without compensation.

Appendix A



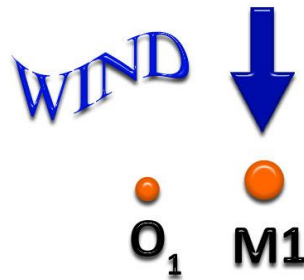
Appendix B (Courses RCSV Alpha)

| Cruising/Jib and Main A | |
|---|--------------------|
| Course Num. | Course |
| 1 | S-M1 - Finish |
| 2 | S-M1-M3-M1- Finish |
| | |
| Jib and Main B/Chalanas/Hunter 21.6/O'Day19 | |
| 1 | S-M2- Finish |
| 2 | S-M2-M3-M2- Finish |
| | |



Appendix C (Courses RCSV Bravo)

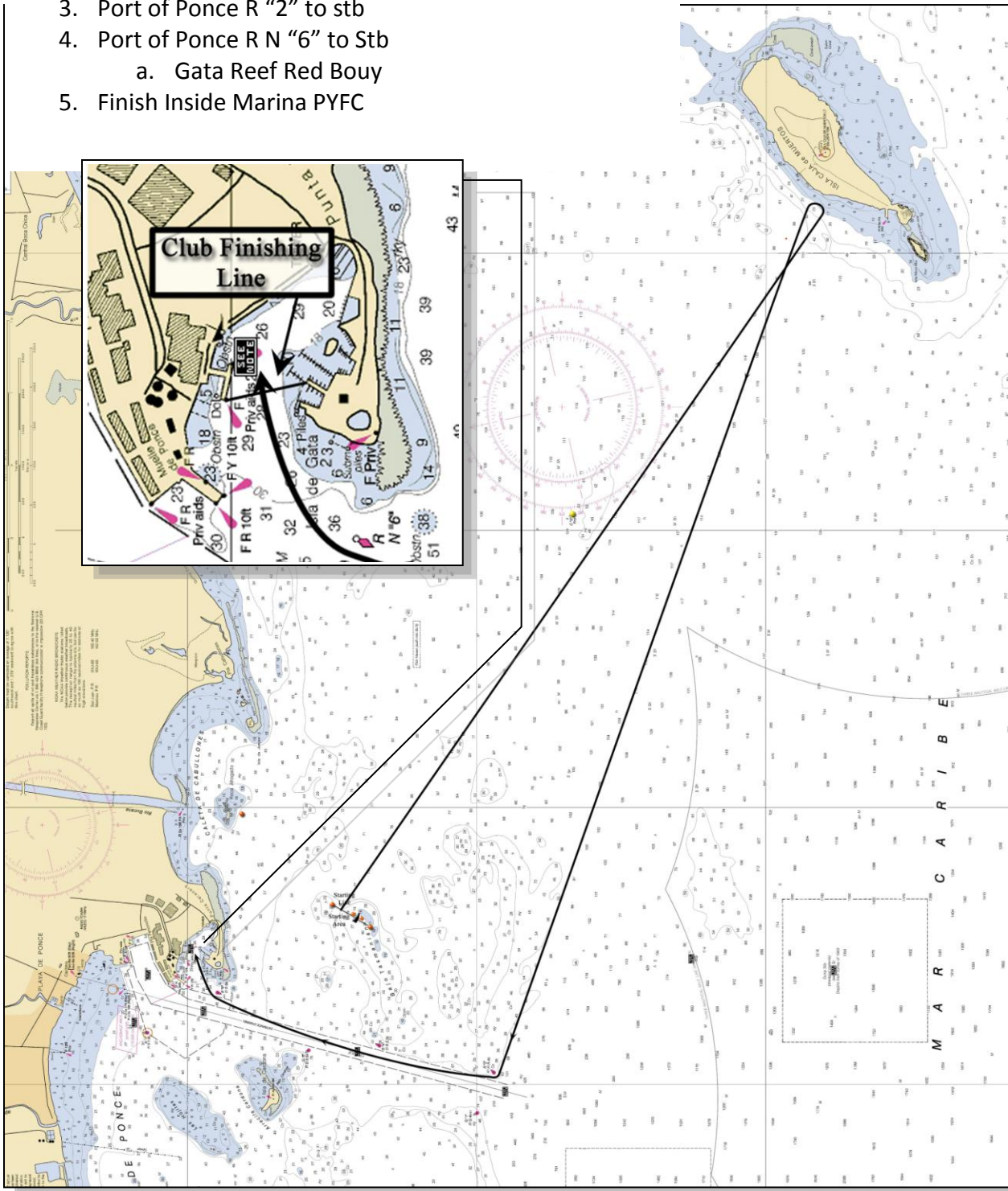
| IC 24 and J 24 Class | |
|---|---|
| Course Num. | Course |
| 1 | S-M2-O ₂ -F |
| 2 | S-M2-O ₂ -G-M2-O ₂ -F |
| 3 | S-M2-*M4-R "N" 6 (Stb) Club Finish |
| CSA Racing/Melges 32 | |
| 1 | S-M1-O ₁ -F |
| 2 | S-M1-O ₁ -G-M1-O ₁ -F |
| 3 | S-M1-*M4-R "N" 6 (Stb) Club Finish |
| *M4 is a Temporary Mark South of Roca Ahogada | |



Appendix C (Cont.)

Course 4 Aprox. 14 NM

1. Start
2. Permanent Yellow Bouy to Port
 - a. Caja de Muertos Permanent Bouy
3. Port of Ponce R "2" to stb
4. Port of Ponce R N "6" to Stb
 - a. Gata Reef Red Bouy
5. Finish Inside Marina PYFC



Appendix D

Safety Requirements

1. Hatches, companionways and ports to be watertight. Cockpit companionways to be capable of being blocked off to main deck level. These companionways shall continue to give access to the interior of the hull.
2. Cockpits to be self-bailing and to be fitted with adequate drains.
3. Soft wood plugs or other suitable material, tapered to fit into all through hull fitting.
4. Lifelines, bow and stern pulpit not less than 18" above deck level, throughout their length (Category 2 – lifeline may be split at the bow to facilitate jib sheeting).
5. Fire extinguisher (charged and in date – one accessible from on-deck).
6. Two buckets with lanyards of suitable length and strength fitted.
7. One anchor with adequate anchor line. Anchors and cables shall be adequate to hold the vessel in unprotected anchorages in conditions, which may be expected to be found in the area. No part of an anchor may overhang the bow of the boat while racing. Anchor must be adequately stowed.
8. Adequate First Aid Kit.
9. Compass properly installed and corrected.
10. Charts covering the racing course.
11. Personal Flotation Device (PFD) for each person on board.
12. Throwable Flotation Device (TFD) in good condition and capable of supporting an adult in water and so attached to the lifelines or other suitable position above deck that it is immediately available for use in an emergency
13. Distress signals: at least 3 orange smoke flares.
14. Heaving line capable of floating and of least 50 feet in length.
15. Fuel tank shut-off valve.
16. In addition, all yachts, are required to carry on board Working VHF radio or cellular telephone.